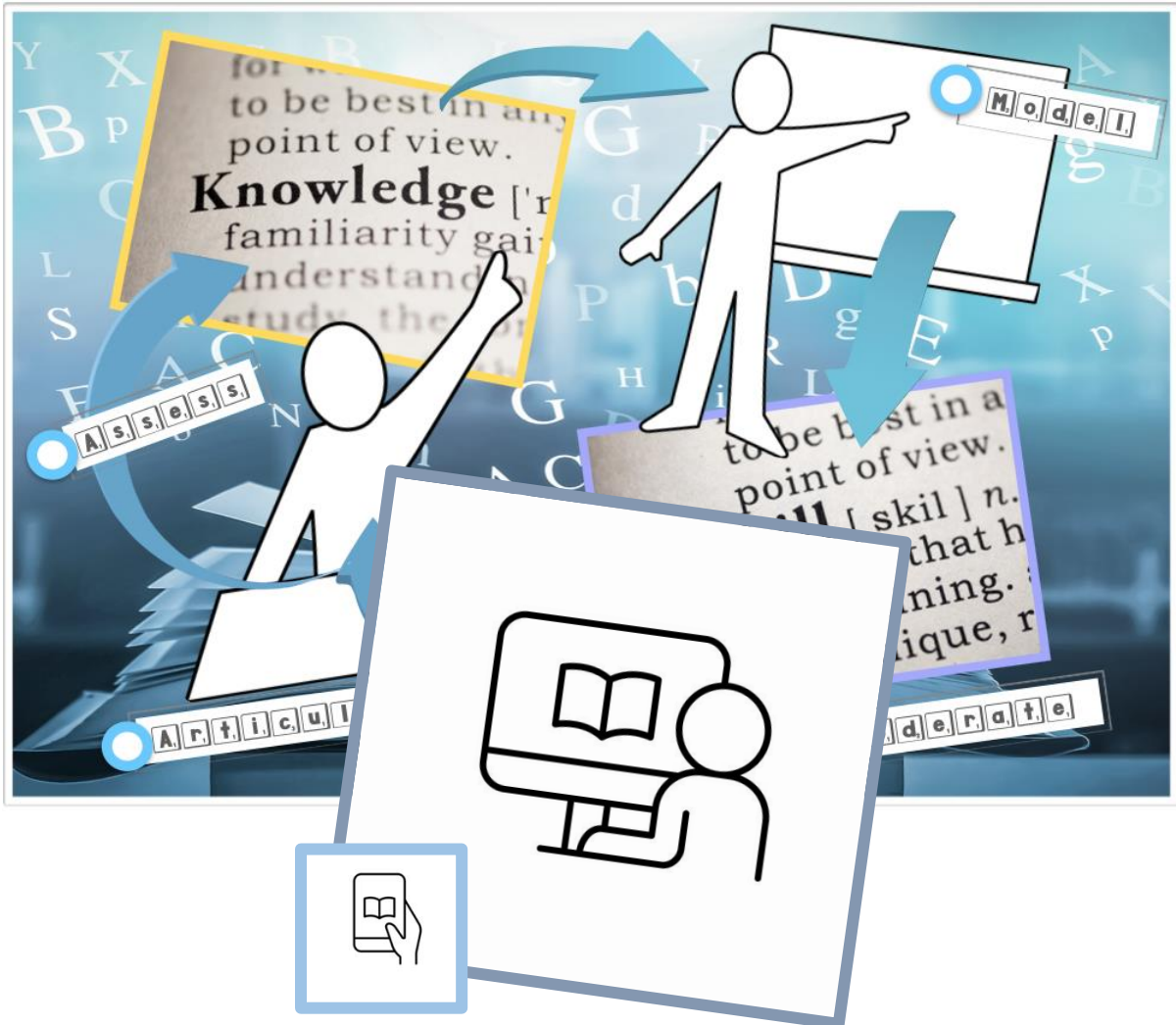




Inspiring excellence



# Remote Learning

Policy 2020-21



# Remote Learning

## Policy 2020-21

### Table of Contents

Introduction and Scope.....	1
From Scenario A to Scenario C – Minimising the Impact of Transition.....	1/2
Microsoft Teams.....	2
Independent Study - for students in school and students out of school.....	2/3
Knowledge Organisers in Years 7-9 and Revision Guides for older students.....	3
Supporting Students with SEND.....	3
Independent and Remote Learning: A Common Approach.....	3
Individual Remote Learning / Scenario A.....	4
Group Remote Learning / Scenario B.....	4
In the event of School Closure / Scenario C.....	4/5
Expectations of Students.....	5
Expectations of Staff.....	5/6
Staff Illness.....	6
Pastoral Care.....	6/7
Safeguarding.....	7
Appendix 1: Independent Learning Hours and Curriculum Allocations per Subject.....	8/9
Appendix 2: Summary of Amendments to the Homework Policy.....	10
Appendix 3: Access to Teaching staff in the event of Scenario B – Year 7.....	11-13
Year 8.....	14-17
Year 9.....	18-21
Year 10.....	22-25
Year 11.....	26-29
Year 12.....	30-32
Year 13.....	33-35
Appendix 4: Access to Subject Specialists in the event of Scenario C.....	
Appendix 5: Contacting Teaching staff in the event of Scenario A, B and C.....	

# Remote Learning

## Policy 2020-21

### Introduction and Scope:

‘Remote Learning’ refers to the provision of work, subject-specialist support, assessment and feedback that will be available to students in the event that face-to-face teaching cannot be delivered as normal.

The school has identified three Scenarios to which this policy will specifically refer. These scenarios continue to apply in the event that the school enters tiered local restrictions (see Appendix 5):

<b>Scenario A: School Open</b>	In which the school remains fully open to all students and remote learning is required in relation to individual staff or student absence.
<b>Scenario B: Partial Lockdown</b>	In which the school remains open for the majority of students, but groups of students (classes, year groups) are required to isolate <i>or</i> in which the school remains open for some groups of students, while other groups need to learn remotely.
<b>Scenario C: Full Lockdown</b>	In which the school remains open for vulnerable students and the children of key workers but is closed to the majority of students.

Situations where this policy may apply therefore include:

- A student who is absent from school for **three or more days** for pre-agreed reasons. For example, taking part in a sporting tournament;
- Student exclusion;
- A student deemed medically unfit for school by medical professionals and where a referral has been made to the Medical Needs Team for Norfolk, with school providing access to work;
- A student unable to attend school due to a period of advised self-isolation but who otherwise remain well;
- An extended period of school closure.

This policy does not apply in situations such as:

- A student who is absent from school without prior authorisation from the school – with or without parental permission (for example, taking a family holiday during term time);
- A parental decision to absent their child as a precaution against an outbreak of infectious disease, but contrary to official medical advice from Public Health England, the UK Government or the World Health Organisation.

### From Scenario A to Scenario C – Minimising the Impact of Transition:

Wymondham High seeks to continue to teach an ambitious and broad curriculum in all subjects, while making use of opportunities to facilitate over-learning and consolidation of current curriculum content – and addressing gaps in knowledge that may have occurred during Lockdown. Our ‘Remote Learning Policy’ therefore seeks to ensure that remote education is integrated into school curriculum planning, in recognition

of the fact that remote education may need to be an essential component in the delivery of the school curriculum for some students. This policy therefore seeks to ensure that any students who are educated at home for any length of time receive the support that they need in order to master the curriculum and make progress in all subject areas.

- In **Scenario A**, it is the case that some individual students will require remote access to the school's curriculum for short periods of time (for example, when required to self-isolate) while the school remains open. These students require sufficient curriculum access in order to minimise the impact of their individual absence and enable them to work remotely.
- In **Scenario B**, it is the case that some groups of students (classes, or year groups) will require remote access to the school's curriculum while the school remains open. Similarly, these groups of students require sufficient curriculum access in order to minimise the impact of their short-term absence.
- In **Scenario C**, it is the case that all students will require remote access to the school's curriculum in order that they continue to be able to master the contents of the curriculum and make progress.

Due to the current need to keep students in year group 'bubbles' and minimise unnecessary contact between students in movements around the school site, the school is operating an elongated version of its two week timetable – which is currently spread over a four week period. This has altered the way that curriculum hours are distributed across the course of the timetable, so that students may have a cluster of lessons in one subject in one part of the four weeks – and then a gap between resuming lessons in that subject again.

It is also the case that the 'face to face' delivery of the curriculum is likely to be further disrupted in the event of individual or group short-term absences – and therefore it is important to ensure that transition from **Scenario A** to **Scenario B** or **Scenario C** is as consistent as possible. Therefore, this policy temporarily and necessarily changes aspects of the school's 'Homework Policy,' in order that independent work set for students ensures continuity of access to the curriculum for students who are in school *and* students who are working remotely. Amendments to the 'Homework Policy' are outlined in Appendix 2.

#### **Microsoft Teams:**

Microsoft Teams is an online communication and collaborative platform that is part of the Microsoft 365 package currently employed by the school. It facilitates live group and individual interaction, in addition to the online submission of assignments, sharing of resources, and facilitation of individual or group feedback. Teams was initially employed by Wymondham High during Lockdown and is the primary method by which remote access to the curriculum will be provided. Every member of the Wymondham High Academy community has been set up on Teams and pre-registered to each of their classes.

#### **Independent Study:**

Independent Learning is a method and philosophy of education in which a student acquires knowledge by his or her own efforts; it places increased educational responsibility for learning on students – aided and facilitated by teaching staff. Students who are in school will be expected to undertake a set number of hours of additional independent study per fortnight from the work that is set for their class or year group on Microsoft Teams. Students who are absent from school will be expected to undertake a set number of hours of independent study per fortnight from the work that is set for their class or year group on Microsoft Teams. The expectations, in terms of hours of Independent Study, for students who are in school and students who are out of school, is outlined in Appendix 1.

The Independent Study that is set for students in school and for students temporarily absent from school may comprise pre-recorded content; employment of educational software such as 'Kahoot,' 'Seneca' and other approved online platforms; direction to relevant recorded material and websites such as 'Oak Academy.' The Independent Study that is set will also direct students to activities that are not computer-based – ensuring that relevant, developmental written work is undertaken in each subject area and in each year group. Independent Study will also focus on provision of opportunities for over-learning and consolidation of current and previously delivered curriculum content.

### **Knowledge Organisers in Years 7-9 and Revision Guides for older students:**

In order to support students with the over-learning and consolidation of current and previously delivered curriculum content, Wyndham High has introduced Knowledge Organisers in each subject area in Years 7-9. These are designed to develop the independent metacognitive study skills required as students progress through the curriculum. Tutorial videos accompany the Knowledge Organisers and are available to download from the school's website. The tutorial videos can be used in Years 10 and above to support independent revision and use of student revision guides. A parent guide to Knowledge Organisers is also available to download from the school website – and is designed to support parents with aiding independent learning in the home environment.

### **Supporting Students with SEND:**

The strategies that are employed by the school in order to facilitate remote learning and independent study for all students are fully inclusive and appropriate to supporting students with SEND. Where additional guidance is required, the school's SEND Department should be contacted in the first instance.

### **Independent and Remote Learning – A Common Approach:**

In order to ensure both consistency and continuity of curriculum delivery and access, the following provision will remain consistent in each of the three scenarios outlined above.

- All work will be set on Microsoft Teams for all students in all year groups.
- All work will be set on a fortnightly basis – and all work set will appear to all students on a Monday, so that all students (in school or absent) are able to plan independent work across the fortnight.
- Parents will be sent notifications of work set via Teams.
- All work set will be a combination of tasks focused on over-learning and consolidation, in addition to skill development (as outlined above).
- Knowledge Organisers will be used to support over-learning and consolidation of key information from current and previous curriculum content in Years 7-9. Revision Guides and other revision materials will be used to support over-learning and consolidation of key information from examination specification and content in older year groups.
- Video tutorials for students will be available to download from the school website. These will support the development of independent study skills and provide support to parents who are supporting learning at home.

By ensuring that these aspects of provision remain consistent across each of the three scenarios outlined above, the school seeks to minimise the impact of sudden changes or sudden short-term absences of either students or staff.

### **Individual Remote Learning – Scenario A:**

This section of the policy applies in situations where the school remains open and working as normal, but an individual student is unable to attend lessons as normal for a period of three or more days, but is otherwise well and able to work. For example, in the event of a period of advised self-isolation or an absence authorised by the school in advance.

In these cases, the provision outlined above (Independent and Remote Learning – A Common Approach) remains consistent: the work set on Microsoft Teams each fortnight will comprise a) Independent Study Tasks for students who are in school and b) Independent Study Tasks for students who are absent. The absent student should therefore complete all Independent Study Tasks set (while students in school complete only the Independent Study Tasks for students in school).

In this scenario:

- When an absent student has questions about the work that is set, s/he should direct queries to their subject teacher via email. Emails should be sent from student school accounts to teacher school accounts and not from personal email accounts.
- A student who is absent for longer than three days will also receive an email from his or her form tutor during the time that s/he is absent.

### **Individual Remote Learning – Scenario B:**

This section of the policy applies in situations where the school remains open, but groups of students (classes or year groups) are required to isolate – but are well and able to work.

In these cases, the provision outlined above (Independent and Remote Learning – A Common Approach) remains consistent: the work set on Microsoft Teams each fortnight will consist of Independent Study Tasks for all students in a class or year group. Absent students should therefore complete all Independent Study Tasks set.

In this scenario:

- Class teachers (or subject specialists – where a class teacher is unavailable due to illness) will be available during set times of the existing school timetable to respond (live) to questions from students about the independent work that has been set. These Q&A sessions will take place via Microsoft Teams and times will be published to parents and students. In this instance, students should not contact teachers via email, but will be directed to live interactive sessions at which their queries can be addressed. This will enable class teachers to instruct, model, and address misconceptions as required.
- The timetabled live Q&A sessions will supplement the provision of online resources and/or pre-recorded learning materials made available to students via Microsoft Teams.
- Students will be encouraged to take part in live Q&A sessions if they are well enough to do so.
- Form tutors will similarly be available online during set times of the existing school timetable in order to facilitate pastoral contact between staff and students. These interactions will also take place via Microsoft Teams and times will be published to parents and students.

### **Individual Remote Learning – Scenario C:**

This section of the policy applies in situations where the school remains open to vulnerable students and the children of key workers but is closed to the majority of students.

In this scenario, the provision outlined above (Independent and Remote Learning – A Common Approach) remains consistent: the work set on Microsoft Teams each fortnight will consist of Independent Study Tasks for all students in a class or year group. Students working remotely should therefore complete all Independent Study Tasks set – and vulnerable students or the children of key workers should also complete all Independent Study Tasks set.

In this scenario:

- A subject specialist will be available during set times of the existing school timetable to respond (live) to questions from students about the independent work that has been set. These Q&A sessions will take place via Microsoft Teams and times will be published to parents and students. In this instance, individual students should not contact teachers via email, but will be directed to live interactive sessions at which their queries can be addressed. This will enable subject specialists to instruct, model, and address misconceptions as required.
- The timetabled live Q&A sessions will supplement the provision of online resources and/or pre-recorded learning materials made available to students via Microsoft Teams.
- Students will be encouraged to take part in live Q&A sessions if they are well enough to do so.
- Form tutors will make contact with tutees on a weekly basis – to ensure that pastoral contact is maintained between tutors and tutees throughout any period of lockdown.
- The school's Senior Leadership Team will deliver at least one live event per week, with one live event delivered on the day of school closure.

### **Expectations of Students:**

Assuming that students are well enough to work, they are expected to:

- Complete the Independent Work that is set for them and submit work electronically, via Microsoft Teams, where directed to do so and by published deadlines.
- Check school emails regularly and respond to communication from teaching staff and/or form tutors.
- Contact the school helpdesk directly, via the published link on the school website, where difficulties with Microsoft Teams are experienced – and where these difficulties do not relate to issues with home internet speed or connection.
- **In Scenario A**, contact teaching staff via email where there are queries relating to the Independent Study tasks set.
- **In Scenario B or C**, attend live timetabled Q&A sessions where there are queries relating to the Independent Study tasks set.
- Uphold the same standards of conduct and behaviour during any online interaction that they would be expected to if in school. This includes, but is not limited to: ensuring appropriate language is used in Teams comments or messages – and that any comment is on-topic and relevant to instruction; ensuring full engagement with the tasks set, including any submission of assignments or work set on Teams.

### **Expectations of Staff:**

Assuming that staff are well enough to work, they are expected to:

- Ensure that Independent Work set for both absent and present students appears on Microsoft Teams on a Monday – and that sufficient resources are available to students via electronic means to enable them to carry out this work at home.
- Work collaboratively with Departments to ensure that resources made available to students are shared and that workload is evenly distributed.

- **In the event of Scenario C**, the Head of Department is responsible for the setting (or delegation) of whole year group tasks for Years 7-9 where this is practicable. Individual teachers remain responsible for work setting in Years 10 and above.
- **In the event of Scenario B and/or C**, to be available at set, published times of the timetable to respond to live questions from students about the Independent Study set.
- Assess and provide feedback, via Teams, in relation to work submitted electronically.
- **In the event of Scenario C**, the Head of Department should ensure that there is regular contact with Departmental staff, via Teams, to ensure that workload is distributed equitably; sufficient Independent Work is being set; and that any concerns regarding student engagement can be passed to the school's Inclusion Team, Safeguarding Team and/or Senior Leadership Team as appropriate.

### **Staff Illness and/or Absence:**

**Scenario A:** When staff are absent and the school is open, they should notify the school's Cover Manager according to normal procedures. If staff are able to set work for any lessons that require it, then work should be set. Where this is not possible, responsibility for setting work falls to the Head of Department or designated delegated colleague. The school's Cover Team are able to access any class resources or materials on Teams – and therefore cover work can direct the Cover Manager to Microsoft Teams. Cover work should be able to be undertaken by students independently and individually, without subject specialist instruction.

In the event that a member of staff is isolating, but well enough to work, cover should be set as outlined above. In this instance, the member of staff should be available to answer questions about the work set via email – in which case, the individual covering the lesson may email queries to the teacher during the course of the lesson.

**Scenario B:** When staff are absent and the school is partially open, they should notify the school's Cover Manager according to normal procedures. In this instance, classes or year groups who are also absent will be directed to the Independent Study tasks published fortnightly on Teams.

In the event that a member of staff is isolating, but well enough to work, s/he should continue to be available at set published times of the timetable to respond, live, to questions from students regarding the Independent Study tasks that have been set. Where staff are undertaking live Q&A via Teams from home, rather than from school, further guidance is provided in the Safeguarding section (below).

**Scenario C:** When staff are ill and unable to work, the school's Cover Manager should be notified of illness according to normal procedures. In this instance, all students would be directed to Independent Study tasks published fortnightly on Teams.

In the event that staff are well and able to work, s/he should be available at set published times of the timetable to provide subject-specific guidance for students working remotely. Where staff are undertaking live Q&A via Teams from home, further guidance is provided in the Safeguarding section (below).

### **Pastoral Care:**

Wyndham High Academy is committed to providing exemplary pastoral care – and is committed to ensuring that this continues during any period of school closure, partial lockdown or individual periods of absence. As such, contact with Form Tutors should take place throughout each of the scenarios and as outlined above.

The School's Wellbeing, Inclusion and Safeguarding Teams will also be available for consultation in each of the three scenarios – and contact will be made with families or students as necessary. Where specific individual



Wellbeing Support is required, during any period of prolonged individual, group or wider student absence, this will be arranged on an individual basis – and communication will take place via Teams. This contact will be subject to Safeguarding guidance (below).

### **Safeguarding:**

During any period of partial or full school closure, the 'Safeguarding and Child Protection Policy' continues to apply, as does the Staff Code of Conduct and IT Acceptable Use agreement. Additionally:

- Any contact between students and staff *must* only take place through official school channels. This includes emails from students to teachers, which should only be sent from students' school email addresses.
- In the event that Form Tutors are required to make telephone contact with tutees during any period of partial or full closure, personal numbers should be withheld and staff privacy safeguarded.
- **In the event of Scenario B and/or C**, where staff may be available on Teams at set times during the timetable to answer student questions about the Individual Study tasks that have been set on Teams: the student video function should be disabled.
- **In the event of Scenario B and/or C**, where staff may be available on Teams at set times during the timetable to answer student questions about the Individual Study tasks: it is to be explicitly stated that there is no expectation for staff to broadcast live video using Teams – although the software has this functionality should colleagues wish to use it. Staff selecting to broadcast live video from home environments should take every care to safeguard their privacy: staff must take care to ensure that what is visible to students does not compromise privacy – and that students are not afforded views into the private homes of their teachers, able to see or identify the family members of staff and that the backgrounds of videos streamed safeguard staff privacy.
- **In the event of Scenario B and/or C**, Microsoft Teams is the only platform that may be used to facilitate live Q&A sessions between teachers and/or subject specialists.
- Where any safeguarding concerns arise, during any of the scenarios outlined above, these must be reported to the school's Safeguarding Team according to the school's Safeguarding Policy.

## Appendix 1: Independent Learning and Curriculum Allocations per Subject

- For students who are in school: the Independent Study Allocation per fortnight is the minimum amount of time that students are expected to spend on work set in each subject area. This is indicated in the yellow column.
- For students who are absent from school: students would be expected to undertake a number of hours of Independent Study *per week* as indicated in the yellow column – *and* the Independent Study tasks indicated in the yellow column.

Years 7 and 8:			
Subject	Independent Study – Time Allocation for Students in School, <b>per fortnight</b>	Curriculum Allocation <b>per fortnight</b>	Independent Study – Time Allocation for Students Absent from School: <b>per week of absence</b>
English	1 hour	6 hours	1.5 hours
Maths	1 hour	6 hours	1.5 hours
Information Technology	30 minutes	2 hours	30 minutes
Modern Foreign Languages	1 hour	6 hours	1.5 hours
Science	1 hour	6 hours	1.5 hours
Art	30 minutes	2 hours	30 minutes
Drama	30 minutes	2 hours	30 minutes
Music	30 minutes	2 hours	30 minutes
Geography	1 hour	4 hours	1 hour
History	1 hour	4 hours	1 hour
Religion, Philosophy and Ethics (RPE)	30 minutes	2 hours	30 minutes
Technology	1 hour	3 hours	45 minutes
Comms	30 minutes	1 hour	15 minutes

Year 9			
Subject	Independent Study – Time Allocation for Students in School, <b>per fortnight</b>	Curriculum Allocation <b>Per fortnight</b>	Independent Study – Time Allocation for Students Absent from School: <b>per week of absence</b>
English	2 hours	6 hours	1.5 hours
Maths	2 hours	6 hours	1.5 hours
Modern Foreign Languages	2 hours	5 hours	1h15m
Science	2 hours	8 hours	2 hours
IT/Computing/Business	1 hour	4 hours	1 hour
Art Options	2 hours	5 hours	1h15m
Drama	2 hours	5 hours	1h15m
Music	2 hours	5 hours	1h15m
Geography	2 hours	5 hours	1h15m
History	2 hours	5 hours	1h15m
Religion, Philosophy and Ethics (RPE)	2 hours	5 hours	1h15m
Technology (All Options)	2 hours	5 hours	1h15m
Classics	2 hours	5 hours	1h15m
Sports Science	2 hours	5 hours	1h15m
Sociology	2 hours	5 hours	1h15m
Film Studies	2 hours	5 hours	1h15m

Years 10 and 11			
Subject	Independent Study – Time Allocation for Students in School, <b>per fortnight</b>	Curriculum Allocation <b>Across the Four Week Timetable</b>	Independent Study – Time Allocation for Students Absent from School: <b>per week of absence</b>
English	3 hours	7 hours	1h45m
Maths	3 hours	7 hours	1h45m
Science	3 hours	10 hours	2h30m
Modern Foreign Languages	3 hours	5 hours	1h15m
IT/Computing	2 hours	4 hours	1 hour
Art (Options)	2 hours	5 hours	1h15m
Drama	2 hours	5 hours	1h15m
Music	2 hours	5 hours	1h15m
Geography	2 hours	5 hours	1h15m
History	2 hours	5 hours	1h15m
Religion, Philosophy and Ethics (RPE)	2 hours	5 hours	1h15m
Technology (All Options)	2 hours	5 hours	1h15m
Classics	2 hours	5 hours	1h15m
Sports Science	2 hours	5 hours	1h15m
Sociology	2 hours	5 hours	1h15m
Film Studies	2 hours	5 hours	1h15m

Years 12 and 13
For each allocated curriculum hour, students in Years 12 and 13 are expected to undertake one hour of preparatory Independent Study and one hour of over-learning and consolidation in each subject area. Work will be set fortnightly on Microsoft Teams by individual class teachers for all students in Years 12 and 13 to whom this policy applies.

## Appendix 2: Summary of Temporary Amendments to the Homework Policy

- ‘Homework’ is replaced by ‘Independent Learning’ or ‘Independent Study,’ in order that the tasks set are applicable to both students who are in school and students who are out of school.
- ‘Homework is set fortnightly,’ becomes ‘Independent Study tasks are set fortnightly, with all tasks appearing to students on a Monday, so that students may plan their study time effectively.’
- ‘Individual class teachers will decide when to schedule homework each fortnight,’ becomes ‘all tasks appearing to students on a Monday, so that students may plan their study time effectively.’
- ‘All homework is logged on Go4Schools’ becomes ‘all Independent Study is set using Microsoft Teams and parents are sent notifications of work set within twenty-four hours of its publication on Teams.’
- Homework time allocations updated to Independent Study time allocations for students in school and students who are absent. This includes weekly curriculum coverage for absent students – ensuring that Independent Study for absent students safeguards time allocated across the curriculum.

## Appendix 3a: Access to Teaching Staff in the event of Scenario B

### Year 7: Live Q&A with Subject Teachers

#### Scenario B – Partial Lockdown (Class or Year Group Absences)

Please note that all Q&A sessions with teaching staff take place at the start of the Session and last for one hour. Timings as indicated. Students who do not wish to speak in front of the group may type questions into the chat function and their teacher will respond.

#### Week 1.1

Session and Time	Monday	Tuesday	Wednesday	Thursday	Friday
<b>A: 8.35am – 9.35am</b>	7y Technology – All Classes, Rotation Staff 7t/Ar4 Miss Flack 7t/Hi3 Mrs Smyth 7t/Gg1 Mr Harrison 7y/Gg2 Geog Teacher 7w/Dr2 Miss Aldridge	7t Technology – All Classes, Rotation Staff 7w/Fr3 Mrs Blunt 7t/Sp1 Mrs Blunt 7w/Sc1 Miss Hibbitt 7w/Sc2 Miss Crowley	7y/Gg1 Mrs Gourlay 7w/Sc3 Mr Catchpole 7y/Sc3 Mr James 7w/Dr1 Mrs Hayes	7y/En1 Mrs Hill 7t/It1 Ms Calver 7t/Ma2 Mrs Bidle 7w/Gg2 Geog Teacher 7y/De3 Miss Sparrow 7y/Sc2 Miss Crowley	7w/En1 Miss Macpherson 7y/Ar2 Miss Flack 7y/De1 Mr Enticott 7t/Pe – PE STAFF <b>Year 7 RE –Mrs Upton (9.35-10.35)</b>
<b>B: 10.55am – 11.55am</b>	7t/En3 Ms O'Connor 7w/Hi2 Mrs Ling 7t/Gg2 Mrs Gourlay 7w/Gg1 Mr Davies 7t/Fr1 Mrs Scarborough 7w/Sc3 Mr Catchpole	7t/Gg3 Geog Teacher 7t/Gg4 Mr Davies 7w/Gg3 Mr Harrison 7w/Mu1 Mr Green 7w/Cm2 Mr Davies	7w/Hi3 Mr Rowe 7w/De1 Mr Enticott	7t/En1 Mrs Everett 7t/En3 Ms O'Connor 7y/En2 Miss Perchard 7w/It3 Mr Longfield 7w/Ma1 Mr Moore 7w/Ma2 Mrs Moore 7y//Sc3 Mr James 7y/Mu1 Mr Green	7t/En2 Ms Perchard 7t/En4 Miss Burt 7y/Ma1 Mrs Bidle 7y/Ma2 Mr Kettle 7y/Ma3 Mrs Taylor 7t/Hi1 Mrs Harvey 7w/Sc1 Mrs Cosham 7t/Sc3 Mrs Hedge 7w/Sc2 Miss Crowley
<b>C: 2pm – 3pm</b>	7w/It1 Miss Rooney 7w/It2 Mr Longfield 7w/Ma3 Mr Kettle 7y/De2 Mrs Jarrald 7t/Fr3 Mrs Barrell 7t/Sc1 Miss Hibbitt 7t/Sc2 Miss Crowley 7t/Sc4 Mr Catchpole 7y/Mu3 Mr Green	7w/En1 Miss Macpherson 7w/En2 Miss Burt 7y/En3 Mrs Jones 7t/Sp2 Mr Enticott 7t/Sc1 Mrs Cosham 7y/Sc1 Miss Hibbitt 7t/Dr4 Mrs Seager 7w/Dr3 Miss Aldridge 7y/Cm2 Mr Davies	7t/It2 Mr Longfield 7t/Ma1 Miss Anderson-Brown 7t/Ma3 Mr Scarborough 7t/Ma4 Mr Kettle 7w/Fr1 Mrs Scarborough 7y/Sp3 Mrs Barrell 7y/Sc1 Mrs Calcutt	7w/En3 Mrs Hill 7t/Ar1 Miss Flack 7y/Hi2 Mrs Smyth 7w/De2 Mrs Jarrald 7t/Sc3 Mrs Wolsey 7t/Mu4 Mr Garner 7w/Cm1 Mr Davies	7w/Ar3 Miss Fisher 7t/Hi4 Mr Tarr 7w/Hi1 Mrs Harvey 7y/Sp1 Miss Anderson 7y/Dr3 Mrs Seager 7t/Dr2 Mr Lincoln

**Tuesday Timings: Session B – 10.45am – 11.45am / C – 1.30pm – 2.30pm**

**Week 1.2**

Session and Time	Monday	Tuesday	Wednesday	Thursday	Friday
<b>A: 8.35am – 9.35am</b>	7y/En2 Miss Perchard 7y/En3 Mrs Jones 7w/Ma2 Mrs Moore 7w/Ma3 Mr Kettle 7t/Sc1 Mrs Cosham 7t/Mu3 Mr Dickson 7t/Cm2 Mr Davies	7t/Gg3 Geog Teacher 7t/Sp4 Mrs Scarborough 7t/Mu2 Mr Green	7t/Ar2 Mrs Carter 7y/Ar1 Mr Moulton 7t/Fr1 Mrs Scarborough 7t/Sc4 Mr Catchpole 7y/Sc2 Mrs Hedge 7w/Mu1 Mr Garner 7w/Mu2 Mr Dickson	7t/Technology - Rotation Staff – All 7t Classes 7y/Hi2 Mrs Smyth 7y/Mu3 Mr Green 7w/Dr1 Mrs Hayes	7w/En3 Mrs Hill 7y/Ma2 Mrs Kahler 7y/Ma3 Mr Longfield 7t/Pe – PE STAFF
<b>B: 10.55am – 11.55am</b>	7t/Hi3 Mrs Smyth 7w/Sc1 Miss Hibbitt 7t/Sc3 Mrs Hedge 7w/Sc3 Mrs Jolly 7y/Sc1 Mrs Calcutt 7t/Mu1 Mr Green	7w/Hi2 Mrs Ling 7y/De2 Mrs Jarrald 7w/Fr3 Mrs Blunt 7w/Sc1 Mrs Cosham 7w/Sc2 Miss Crowley 7y/Sc1 Miss Hibbitt 7t/Dr2 Miss Aldridge	7t/En4 Miss Burt 7w/Gg1 Mr Davies 7w/Gg3 Mr Harrison 7y/Gg1 Mrs Gourlay 7y/Sc3 Mrs Cosham 7y/Dr2 Mrs Seager	7t/En2 Ms Perchard 7y/lt2 Miss Rooney 7y/lt3 Mrs Southgate 7w/De1 Mr Enticott 7t/Sc4 Mr James	7t/En4 Miss Burt 7w Technology – All Classes, Rotation Staff 7t/Ar3 Miss Fisher 7y/Hi1 Mr Mulcahy 7t/Fr2 Mrs Barrell 7t/Sc1 Miss Hibbitt 7y/Sc3 Mrs Cosham 7y/Mu2 Mr Green
<b>C: 2pm – 3pm</b>	7y/lt1 Mr Ngai 7w/Gg2 Geog Teacher 7w/Fr2 Mrs Barrell	7t/Hi2 Mrs Ling 7y/Pe – PE STAFF 7t/Cm3 Mr Davies	7w/Ar2 Miss Flack 7t/Hi1 Mrs Harvey 7t/Hi4 Mr Tarr 7w/De3 Miss Keeling 7t/Sc2 Miss Crowley 7t/Sc3 Mrs Wolsey	7t/En1 Mrs Everett 7y/En1 Mrs Hill 7w/Ma1 Mr Moore 7y/Ma1 Mrs Bidle 7t/Sc2 Mrs Hedge 7w/lt2 Mr Longfield	7t/Ma1 Miss Anderson-Brown 7t/Ma2 Mrs Bidle 7t/Ma3 Mrs Taylor 7t/Ma4 Mr Kettle 7w/Hi1 Mrs Harvey 7w/Pe – PE STAFF 7y/Dr1 Mrs Hayes

**Tuesday Timings: Session B – 10.45am – 11.45am / C – 1.30pm – 2.30pm**

**Week 2.1**

Session and Time	Monday	Tuesday	Wednesday	Thursday	Friday
<b>A: 8.35am – 9.35am</b>	7t/lt3 Mrs Calver 7t/lt4 Mrs Southgate 7w/Sc2 Mrs Hedge 7w/Sc3 Mrs Jolly 7y/Sc2 Miss Crowley 7y/Sc3 Mrs Cosham	7y/Ma2 Mrs Kahler 7y/Ma3 Mr Longfield 7t/Ar3 Miss Fisher 7y/Ar3 Miss Flack 7t/Hi2 Mrs Ling 7t/Fr4 Mrs Keeling 7t/Sp1 Mrs Blunt	7w/Ma1 Mr Longfield 7w/Ma2 Mrs Moore 7w/Ma3 Mr Kettle 7t/Hi3 Mrs Smyth 7y/Sp2 Mrs Scarborough 7t/Dr1 Mrs Hayes 7y/Cm1 Mr Davies	7w Technology – All Classes, Rotation Staff 7y/Ar1 Mr Moulton 7t/Hi4 Mr Tarr 7t/Gg1 Mr Harrison 7y/Gg2 Geog Teacher 7y/Sc2 Mrs Hedge 7t/Mu2 Mr Green 7t/Dr3 Mrs Hayes	7t/Ma2 Mrs Bidle 7w/Hi1 Mrs Harvey 7y/Gg3 Mr Davies
<b>B: 10.55am – 11.55am</b>	7w/Hi3 Mr Rowe 7t/Sc1 Mrs Cosham	7t/En2 Ms Perchard 7t/Hi1 Mrs Harvey	7t/En4 Miss Burt 7w/Ar1 Miss Daniels	7y/lt2 Miss Rooney 7y/Ma1 Mrs Bidle	7y/En1 Mrs Hill 7t/Gg2 Mrs Gourlay

	7w/Sc1 Miss Hibbitt	7y/Gg1 Mrs Gourlay 7y/Gg3 Mrs Squires 7y/Mu2 Mr Green	7w/Hi2 Mrs Ling 7y/Hi1 Mr Mulcahy 7w/De3 Miss Sparrow 7t/Sp3 Mrs Barrell	7t/Gg3 Geog Teacher 7t/Gg4 Mr Davies 7t/Mu1 Mr Green 7w/Mu2 Mr Dickson	7t/Mu3 Mr Dickson 7y/Dr2 Mrs Seager <b>Year 7 RE –Mrs Upton (11.55-12.55)</b>
<b>C: 2pm – 3pm</b>	7w/lt1 Miss Rooney 7t/Sc1 Miss Hibbitt 7t/Sc2 Miss Crowley 7t/Sc4 Mr Catchpole 7y/Mu3 Mr Green	7t/En3 Ms O'Connor 7w/En1 Miss Macpherson 7y/En3 Mrs Jones 7y/Sc1 Miss Hibbitt 7t/Dr4 Mrs Seager	7w/En2 Miss Burt 7y/En2 Miss Perchard 7t/lt2 Mr Longfield 7t/Ma1 Miss Anderson- Brown 7t/Ma3 Mr Scarborough 7t/Ma4 Mr Kettle	7t/En2 Ms Gosney 7w/En3 Mrs Hill 7t/Ar1 Miss Flack 7y/Hi2 Mrs Smyth 7w/De2 Mrs Jarrald 7t/Sc3 Mrs Wolsey 7t/Mu4 Mr Garner	7w/Ar3 Miss Fisher 7y/Sp1 Miss Anderson 7y/Dr3 Mrs Seager

**Tuesday Timings: Session B – 10.45am – 11.45am / C – 1.30pm – 2.30pm**

### Week 2.2

Session and Time	Monday	Tuesday	Wednesday	Thursday	Friday
<b>A: 8.35am – 9.35am</b>	7w/Gg1 Mr Davies 7t/Sc2 Miss Crowley 7w/Sc2 Mrs Hedge	7y Technology – All Classes, Rotation Staff 7t/Fr2 Mrs Barrell 7t/Sp1 Mrs Blunt	7t/En3 Ms O'Connor 7w/Ma2 Mrs Moore 7w/Ma3 Mr Kettle 7t/Gg1 Mr Harrison 7y/Sp2 Mrs Scarborough 7t/Sc4 Mr Catchpole 7y/Mu1 Mr Green	7t/lt1 Ms Calver 7t/lt4 Mrs Southgate 7y/Sp3 Mrs Barrell 7t/Sc4 Mr James 7w/Dr2 Miss Aldridge	7t/Ar2 Mrs Carter 7t/Dr3 Mrs Hayes
<b>B: 10.55am – 11.55am</b>	7y/Ar2 Miss Flack 7t/Hi2 Mrs Ling 7y/De1 Mr Enticott 7y/Sc3 Mr James 7w/Dr3 Miss Aldridge 7t/Cm4 Mr Davies	7t/lt3 Mrs Calver 7t/Ma1 Miss Anderson- Brown 7t/Ma2 Mrs Bidle 7t/Ma4 Mr Kettle 7y/Hi1 Mr Mulcahy 7w/Mu3 Mr Green	7w/En1 Miss Macpherson 7y/lt3 Mrs Southgate 7y/Ma1 Mr Moore 7y/Ma2 Mrs Kahler 7t/Fr3 Miss Anderson 7t/Sp4 Mrs Scarborough 7y/Mu3 Mr Garner 7t/Dr1 Mrs Hayes	7w/En2 Mrs Everett 7y/Gg3 Mr Davies 7t/Fr4 Mr Dunne 7t/Sp2 Mr Enticott 7t/Sp3 Mrs Barrell 7w/Sc3 Mr Catchpole 7y/Sc2 Miss Crowley	7y/En2 Miss Perchard 7w/lt3 Mr Longfield 7w/Ma1 Mr Moore 7w/Ar1 Miss Daniels 7t/Gg2 Mrs Gourlay 7t/Gg4 Mr Davies 7t/Cm1 Mr R. Davies
<b>C: 2pm – 3pm</b>	7y/lt1 Mr Ngai 7t/Ma3 Mr Scarborough 7y/Ma3 Mrs Taylor 7w/Hi3 Mr Rowe 7w/Fr2 Mrs Barrell	7t/En4 Miss Burt 7w/En3 Mrs Hill 7w/Gg2 Geog Teacher 7y/Pe – PE STAFF	7w/Ar2 Miss Flack 7y/Ar3 Mrs Pinnington 7w/Gg3 Mr Harrison 7w/De3 Miss Keeling 7t/Sc3 Mrs Wolsey 7w/Sc1 Mrs Cosham	7t/En1 Mrs Everett 7y/En1 Mrs Hill 7y/En3 Mrs Jones 7t/Ar4 Miss Flack 7t/Sc2 Mrs Hedge	7y/Gg2 Mr Harrison 7W/Pe – PE STAFF 7y/Dr1 Mrs Hayes 7y/Cm3 Mr Davies

**Tuesday Timings: Session B – 10.45am – 11.45am / C – 1.30pm – 2.30pm**

## Appendix 3b: Access to Teaching Staff in the event of Scenario B

### Year 8: Live Q&A with Subject Teachers

#### Scenario B – Partial Lockdown (Class or Year Group Absences)

Please note that all Q&A sessions with teaching staff take place at the start of the Session and last for one hour. Timings as indicated. Students who do not wish to speak in front of the group may type questions into the chat function and their teacher will respond.

#### Week 1.1

Session and Time	Monday	Tuesday	Wednesday	Thursday	Friday
<b>A: 8.35am – 9.35am</b>	8r/lt4 Mr Ngai 8r/lt5 Miss Rooney 8s/Sc2 Mr Watts 8s/Sc3 Miss Watkins 8s/De1 Mrs Jarrald 8s/Sp1 Mr Dunne 8s/Sp2 Mrs Scarborough	8t/Gg4 Mr Harrison 8t/Hi3 Mrs Smyth 8t/Re1 & 2 Mrs Upton 8y/Dr1 Mrs Seager 8w/Dr3 Miss Aldridge 8y/Mu3 Mr Green 8w/Ar1 Mr Moulton 8w/Ar2 Miss Flack 8y/Cm2 Mr Dickson	8r/En1 Miss Heeley 8r/En2 Miss Macpherson 8r/En4 Mr Cooper 8r/En5 Ms Gosney 8s/lt1 Mr Dickerson 8s/lt3 Mr Ngai 8s/lt4 Mrs Southgate	8t/Gg3 Mr Davies 8t/Hi2 Mrs Ling 8t/Hi4 Mr Tarr 8w/Mu1 Mr Dickson 8w/Mu3 Mr Garner 8y/Pe – PE STAFF	8y/Te1 Rotation Staff 8y/Te2 Rotation Staff 8y/Te3 Rotation Staff 8y/Te4 Rotation Staff (Mr Lincoln / Miss Harwood / Miss Bentley / Miss Ryan) 8w/Hi2 Mrs Harvey 8t/Mu2 Mr Garner 8t/Ar3 Miss Fisher 8t/Ar4 Mrs Craft 8t/Cm1 Mr Dickson
<b>B: 10.55am – 11.55am</b>	8r/En3 Mrs Everett 8s/lt2 Mr Ngai 8s/lt5 Miss Rooney	8s/Sc1 Mr James 8s/Sc4 Miss Hibbitt 8s/De2 Mr Enticott 8s/De3 Ms Sparrow 8r/Ma1 Mr Moore 8r/Ma2 Mr Longfield 8r/Ma3 Mr Ellis 8r/Ma4 Mr Lau 8r/Ma5 Mrs Kahler	8s/En1 Miss Burt 8s/En2 Mr Cooper 8s/En3 Miss Macpherson 8s/En4 Miss Heeley 8s/En5 Ms Perchard 8r/Sc2 Mrs Oswick 8r/Sc3 Mr James 8r/Sc4 Miss Watkins 8r/Sc5 Mrs Jolly 8r/Fr1 Mrs Scarborough	8y/Gg2 Mr Harrison 8t/Dr3 Mrs Seager 8t/Ar1 Miss Flack 8t/Cm2 Mr Dickson	8t/Gg1 Mrs Gourlay 8t/Gg2 Mrs Squires 8y/Mu3 Mr Garner 8y/Ar2 Mr Moulton 8y/Cm1 Mr Dickson
<b>C: 2pm – 3pm</b>	8t/Hi1 Mr Pearce 8w/Dr2 Miss Aldridge 8w/Cm3 Mr Dickson 8w/Cm1 Mrs Heale	8w/Gg1 Mrs Gourlay 8w/Hi3 Mr Tarr 8y/Hi2 Mr Mulcahy 8y/Hi3 Mrs Ling	8y/Gg1 Mr Davies 8t/Dr1 Mrs Seager 8t/Mu3 Mr Dickson 8t/Mu4 Mr Garner	8w/Gg2 Ms Freaney 8w/Gg3 Mr Davies 8w/Hi1 Mrs Ling 8y/Hi1 Mr Rowe 8t/Pe1 PE STAFF	8r/Sc1 Miss Black 8r/Sc2 Miss Crowley 8r/Sc3 Miss Hibbitt 8r/Sc4 Mr Moore 8r/Sc5 Mr Catchpole 8s/Ma1 Mr Ellis 8s/Ma2 Mr Kettle



					8s/Ma3 Miss Anderson-Brown 8s/Ma4 Mr Lau 8s/Ma5 Mr Scarborough
--	--	--	--	--	--

**Tuesday Timings: Session B – 10.45am – 11.45am / C – 1.30pm – 2.30pm**

**Week 1.2**

Session and Time	Monday	Tuesday	Wednesday	Thursday	Friday
<b>A: 8.35am – 9.35am</b>	8t/Te1 Rotation Staff 8t/Te2 Rotation Staff 8t/Te3 Rotation Staff 8t/Te4 Rotation Staff 8t/Te5 Rotation Staff (Mrs Ryan / Miss Bentley / Miss Harwood / Mr Lincoln / Mrs Calver) 8y/Gg3 Mrs Gourlay 8w/Dr1 Mr Cole 8w/Mu3 Mr Garner	8s/En1 Miss Burt 8s/En2 Mr Cooper 8s/En3 Mrs Hill 8s/En4 Miss Heeley 8s/En5 Ms Perchard 8r/Sc2 Mrs Oswick 8r/Sc4 Miss Watkins 8r/Sc5 Mrs Jolly	8w/Hi1 Mrs Ling 8w/Hi2 Mrs Harvey 8y/Dr1 Mrs Seager 8y/Dr2 Mrs Hayes 8y/Ar3 Miss Flack	8r/lt1 Mrs Southgate 8r/lt2 Miss Rooney 8r/lt4 Mr Ngai 8r/lt5 Mr Dickerson 8r/Ma3 Mrs Moore 8s/Sc1 Mr James 8s/Sc3 Mr Catchpole 8s/Sp1 Mr Dunne	8r/En1 Miss Heeley 8r/En2 Miss Macpherson 8r/En3 Mrs Everett 8r/En4 Mr Cooper 8r/En5 Ms Gosney 8s/Ma1 Mr Ellis 8s/Ma2 Mr Kettle 8s/Ma3 Miss Anderson-Brown 8s/Ma4 Mr Lau 8s/Ma5 Mr Scarborough
<b>B: 10.55am – 11.55am</b>	8r/lt3 Mrs Southgate 8s/Sc1 Miss Black 8s/Sc2 Mrs Cosham 8s/Sc3 Miss Watkins 8s/Sp2 Mrs Barrell 8r/Ma1 Mr Moore 8r/Ma2 Mr Longfield 8r/Ma4 Mr Lau 8r/Ma5 Mrs Kahler	8w/Te1 Rotation Staff 8w/Te2 Rotation Staff 8w/Te3 Rotation Staff 8w/Te4 Rotation Staff (Mrs Ryan / Miss Harwood / Mr Davies / Mr Lincoln) 8t/Hi1 Mr Pearce 8y/Hi3 Mrs Ling	8s/lt3 Mr Ngai 8s/lt4 Mrs Southgate 8s/lt5 Miss Rooney	8t/Gg3 Mr Davies 8t/Gg4 Mr Harrison 8t/Hi2 Mrs Ling 8w/Mu2 Mr Garner 8w/Ar1 Mr Moulton 8w/Ar3 Miss Daniels	8t/Gg1 Mrs Gourlay 8t/Gg2 Mrs Squires 8t/Re3/4 Mrs Upton 8y/Dr2 Mrs Hayes 8y/Dr3 Miss Aldridge 8w/Pe PE STAFF 8y/Ar1 Miss Flack
<b>C: 2pm – 3pm</b>	8t/Hi3 Mrs Preston 8t/Hi4 Mr Tarr 8w/Ar2 Miss Flack		8t/Dr4 Ms Hayes 8t/Mu1 Mr Green 8t/Ar2 Miss Daniels	8s/Sc5 Mrs Cosham 8r/Fr1 Mrs Barrell 8r/Fr2 Mr Dunne 8s/De2 Mr Enticott 8r/Sp1 Mrs Blunt 8r/Sp2 Miss Smith 8r/Sp3 Miss Anderson	8s/Sc2 Miss Watkins 8s/Sc4 Miss Hibbitt 8s/Sc5 Miss Crowley 8s/De1 Mrs Jarrauld 8s/De3 Ms Sparrow

**Tuesday Timings: Session B – 10.45am – 11.45am / C – 1.30pm – 2.30pm**

**Week 2.1**

Session and Time	Monday	Tuesday	Wednesday	Thursday	Friday
<b>A: 8.35am – 9.35am</b>	8w/Gg1 Mr Harrison 8w/Hi3 Mr Tarr 8y/Ar1 Miss Flack 8y/Cm3 Mr Davies	8s/En2 Mr Cooper 8r/Sc1 Miss Black 8t/Gg3 Mr Davies 8r/Fr2 Mr Dunne 8r/Sp1 Ms Sparrow	8w/Dr1 Mr Cole 8w/Mu2 Mr Garner 8w/Ar3 Miss Fisher	8r/It2 Miss Rooney 8r/It3 Mrs Southgate 8s/De3 Ms Sparrow 8s/Sp1 Miss Smith 8w/Hi2 Mrs Harvey 8r/Ma1 Mr Moore 8r/Ma4 Mr Lau	8s/Sc1 Mr James 8s/Sc3 Mr Catchpole 8s/Sc5 Mr Watts 8r/Fr1 Mrs Barrell 8s/De2 Mrs Jarrald 8r/Sp1 Ms Sparrow
<b>B: 10.55am – 11.55am</b>	8w/Gg2 Ms Freaney 8y/Gg1 Mrs Squires 8y/Gg2 Mr Harrison 8y/Gg3 Mrs Gourlay 8t/Dr2 Miss Aldridge 8t/Cm3 Mrs Heale	8r/Sc3 Miss Hibbitt 8s/Sc4 Mrs Wolsey 8r/Sc5 Mr Catchpole 8s/Ma1 Mr Ellis 8s/Ma2 Mr Kettle 8s/Ma3 Miss Anderson- Brown 8s/Ma4 Mr Lau 8s/Ma5 Mrs Moore	8r/It1 Mrs Southgate 8s/De1 Mrs Keeling 8s/Sp2 Mrs Scarborough 8r/Ma2 Mr Kettle 8r/Ma5 Mrs Kahler	8s/En1 Miss Burt 8s/En3 Miss Macpherson 8s/En4 Miss Heeley 8s/En5 Ms Perchard 8r/Fr2 Mr Dunne 8r/Sp2 Miss Smith 8r/Sp3 Miss Anderson	8r/En1 Miss Heeley 8r/En2 Miss Macpherson 8r/En3 Mrs Everett 8r/En4 Mr Cooper 8r/En5 Ms Gosney 8s/Sc2 Miss Watkins 8s/Sc4 Miss Hibbitt
<b>C: 2pm – 3pm</b>	8t/Gg4 Mr Harrison 8t/Hi1 Mr Pearce 8w/Dr2 Miss Aldridge 8y/Pe – PE STAFF 8w/Cm1 Mrs Heale	8t/Te1 Rotation Staff 8t/Te2 Rotation Staff 8t/Te3 Rotation Staff 8t/Te4 Rotation Staff 8t/Te5 Rotation Staff (Mrs Ryan / Miss Bentley / Miss Harwood / Mr Lincoln / Mrs Calver)	8y/Hi2 Mr Mulcahy 8t/Dr1 Mrs Seager 8t/Mu3 Mr Dickson 8t/Mu4 Mr Garner 8w/Pe PE STAFF	8w/Gg2 Ms Freaney 8w/Gg3 Mr Davies 8y/Gg2 Geog Teacher 8w/Hi1 Mrs Ling 8y/Hi1 Mr Rowe	8r/Sc2 Miss Crowley 8r/Sc4 Mr Moore 8t/Pe1 PE STAFF+

**Tuesday Timings: Session B – 10.45am – 11.45am / C – 1.30pm – 2.30pm**

**Week 2.2**

Session and Time	Monday	Tuesday	Wednesday	Thursday	Friday
<b>A: 8.35am – 9.35am</b>	8w/Gg1 Mr Harrison 8y/Dr3 Mr Cole 8y/Mu1 Mr Garner	8w/Hi3 Mr Tarr 8y/Mu1 Mr Garner 8t/Ar3 Miss Fisher 8t/Ar4 Mrs Craft 8y/Ar3 Miss Flack 8y/Ar2 Mr Moulton 8t/Dr2 Miss Aldridge	8s/En1 Miss Burt 8s/En2 Mr Cooper 8s/En3 Miss Macpherson 8s/En4 Miss Heeley 8s/En5 Ms Perchard 8r/Sc1 Miss Crowley 8r/Sc3 Mr James 8r/Sc5 Mr Catchpole	8w/Gg3 Mr Davies 8y/Gg3 Mrs Gourlay 8y/Hi1 Mr Rowe	8r/Sc1 Miss Black
<b>B: 10.55am – 11.55am</b>	8s/It1 Miss Rooney 8r/Sc2 Mrs Oswick 8r/Sc3 Miss Hibbitt	8s/Sc1 Miss Black 8r/Ma1 Mr Moore 8r/Ma2 Mr Longfield	8t/Gg1 Mrs Gourlay 8t/Gg2 Mrs Squires 8y/Hi3 Mrs Ling	8y/Te1 Rotation Staff 8y/Te2 Rotation Staff 8y/Te3 Rotation Staff	8r/Sc1 Miss Crowley 8s/Sc2 Mrs Cosham 8s/Sc3 Mr Catchpole

	8r/Sp2 Miss Smith 8r/Sp3 Miss Anderson	8r/Ma3 Mr Ellis 8r/Ma4 Mr Lau 8r/Ma5 Mrs Kahler		8y/Te4 Rotation Staff (Mr Lincoln / Miss Harwood / Miss Bentley / Miss Ryan) 8y/Gg1 Mr Davies 8t/Hi3 Mrs Smyth 8t/Dr3 Mrs Seager 8t/Mu2 Mr Garner 8t/Ar1 Miss Flack 8t/Cm4 Mrs Heale	8r/Sc4 Mr Moore 8s/Sp1 Miss Smith 8s/Sp2 Mrs Barrell
<b>C: 2pm – 3pm</b>	8t/Hi2 Mr Mulcahy 8t/Hi4 Mr Tarr 8w/Dr3 Miss Aldridge 8w/Mu1 Mr Dickson	8r/En1 Miss Heeley 8r/En2 Miss Macpherson 8r/En3 Mrs Everett 8r/En4 Mr Cooper 8r/En5 Ms Gosney 8s/Ma1 Mr Ellis 8s/Ma2 Mr Kettle 8s/Ma3 Miss Anderson-Brown 8s/Ma4 Mr Lau 8s/Ma5 Mr Scarborough	8w/Te1 Rotation Staff 8w/Te2 Rotation Staff 8w/Te3 Rotation Staff 8w/Te4 Rotation Staff (Mrs Calver / Miss Harwood / Miss Bentley / Mr Lincoln) 8y/Hi2 Mr Mulcahy 8t/Dr4 Ms Hayes 8t/Mu1 Mr Green 8t/Ar2 Miss Daniels	8s/Sc4 Mrs Wolsey 8s/Sc5 Mrs Cosham 8r/Fr1 Mrs Barrell 8r/Fr2 Mr Dunne 8s/De1 Mrs Keeling 8s/De2 Mr Enticott 8s/De3 Ms Sparrow 8r/Sp1 Mrs Blunt 8r/Sp2 Miss Smith 8r/Sp3 Miss Anderson	8s/Sc5 Miss Crowley 8r/Ma3 Mr Ellis

**Tuesday Timings: Session B – 10.45am – 11.45am / C – 1.30pm – 2.30pm**

## Appendix 3c: Access to Teaching Staff in the event of Scenario B

### Year 9: Live Q&A with Subject Teachers

#### Scenario B – Partial Lockdown (Class or Year Group Absences)

Please note that all Q&A sessions with teaching staff take place at *the start of the Session* and last for one hour. Timings as indicated. Students who do not wish to speak in front of the group may type questions into the chat function and their teacher will respond.

#### Week 1.1

Session and Time	Monday	Tuesday	Wednesday	Thursday	Friday
<b>A: 8.35am – 9.35am</b>	9s/En1 Miss Heeley 9s/En2 Miss Burt 9s/En3 Ms O'Connor 9s/En4 Mr Cooper 9s/En5 Miss Macpherson 9r/Sc1b Mr Catchpole 9r/Scb2 Mrs Jolly 9r/Sc4a Miss Hibbitt	9r/Ma1 Mrs Moore 9r/Ma2 Mr Moore 9r/Ma3 Mrs Kahler 9r/Ma4 Mr Moore 9s/Hi1 Mr Pearce 9s/Hi2 Mrs Ling 9s/Gg1 Mr Davies 9s/Gg2 Mrs Squires 9s/Gg3 Mrs Gourlay	9r/Fr1 Mrs Barrell 9r/Fr2 Mr Dunne 9r/Sc3b Mrs Hedge 9r/Sc4b Mrs Wolsey 9s/sc2a Mr Borthwick 9s/Sc3a Miss Crowley	9r/lt1 Mrs Southgate 9r/lt2 Mr Ngai 9r/lt3 Miss Rooney 9s/Ma3 Mr Lau	9s/Cp1 Miss Rooney 9s/lt1 Mr Ngai 9s/lt3 Mrs Brownhill 9s/lt4 Mrs Southgate 9r/Sc1a Mrs Cosham 9r/Sc2a Mr James 9r/Sc3a Miss Crowley
<b>B: 10.55am – 11.55am</b>	9s/De1 Mrs Jarrald 9s/De2 Miss Keeling	9r/En1 Miss Macpherson 9r/En2 Miss Heeley 9r/En3 Ms Perchard 9r/En4 Miss Burt 9s/Sc1b Mrs Ottaway 9s/Sc2b Mr Catchpole 9s/Sc3b Mrs Hedge 9s/Sc4b Miss Watkins 9s/Sc5b Miss Crowley	9s/Ma1 Mrs Moore 9s/Ma2 Mr Ellis 9s/Ma4 Mr Moore 9s/Ma5 Miss Anderson-Brown	9s/lt2 Mr Ngai 9r/Hi1 Mrs Harvey 9r/Hi2 Mrs Preston 9r/Gg1 Ms Freaney 9r/Gg2 Mr Davies	9a/Te1 Mrs Ryan 9a/Te2 Miss Harwood 9a/Fd1 Mr Lincoln 9a/Re1 Mrs Upton 9a/Ss1 Mr Stoltz 9a/So1 Mrs Heale 9a/Mu1 Mr Green 9a/Dr1 Mrs Seager 9a/Fi1 Mr Cole
<b>C: 2pm – 3pm</b>	9B/Bs1 Mr Dickerson 9B/Te2 Mr Davies 9B/Te3 Ms Calver 9B/Fo1 Mr Lincoln 9b/Ar1 Miss Flack 9b/At1 Miss Fisher 9b/Pg1 Mrs Carter 9b/Cc1 Mrs Smyth 9b/Ss1 Mr Ellis 9b/Ss1 Mr Gibbons	9r/Sp1 Ms Sparrow 9r/Sp2 Miss Anderson	9r/Cp1 Mr Ngai 9s/Sp1 Mr Enticott 9s/Sp2 Miss Anderson 9s/Sp3 Mr Dunne	9s/Sc1a Mr Watts 9s/Sc3a Miss Crowley 9s/Sc4a Mrs Calcutt	9a/Ar1 Miss Flack 9a/At1 Miss Fisher 9a/Pg1 Mrs Carter 9r/Pe – PE STAFF

	9b/Dr1 Mrs Seager		9c/De1 Ms Sparrow 9c/Sp1 Mr Dunne		
<b>D: 3pm – 4pm</b>					

**Tuesday Timings: Session B – 10.45am – 11.45am / C – 1.30pm – 2.30pm**

**Week 1.2**

<b>Session and Time</b>	<b>Monday</b>	<b>Tuesday</b>	<b>Wednesday</b>	<b>Thursday</b>	<b>Friday</b>
<b>A: 8.35am – 9.35am</b>	9s/En1 Miss Heeley 9s/En2 Miss Burt 9s/En3 Mrs Gosney 9s/En4 Mr Cooper 9s/En5 Miss Macpherson 9r/Sp1 Ms Sparrow 9r/Sp2 Miss Anderson	9r/Ma1 Mrs Bidle 9r/Ma2 Mr Kettle 9r/Ma3 Mrs Kahler 9r/Ma4 Mr Moore	9s/De1 Mrs Jarrald 9s/De2 Miss Keeling 9s/Sp1 Mr Enticott 9s/Sp2 Miss Anderson 9s/Sp3 Mr Dunne	9r/Gg1 Ms Freaney 9r/Gg2 Mr Davies 9s/Pe – PE STAFF	9s/Cp1 Miss Rooney 9s/It1 Mr Ngai 9s/It3 Mrs Brownhill 9s/It4 Mrs Southgate 9s/Cm3 Mrs Heale 9r/Sc2a Mr James 9r/Sc3a Miss Crowley 9r/Sc4a Miss Hibbitt
<b>B: 10.55am – 11.55am</b>	9B/Bs1 Mr Dickerson 9B/Te2 Mr Davies 9B/Te3 Mrs Calver 9B/Fd1 Mr Lincoln 9b/Ar1 Miss Flack 9b/At1 Miss Fisher 9b/Pg1 Miss Daniels 9b/Cc1 Mrs Smyth 9b/Ss1 Mr Ellis 9b/Ss1 Mr Gibbons 9b/Dr1 Mrs Seager	9r/Fr1 Mrs Barrell 9r/Fr2 Mr Dunne	9r/Sc1b Mr Catchpole 9r/Scb2 Mrs Jolly 9r/Sc3b Mrs Hedge 9r/Sc4b Mrs Wolsey 9s/Sc1b Mrs Ottaway	9r/Fr1 Mrs Barrell 9r/Fr2 Mr Dunne 9r/Sp1 Ms Sparrow 9r/Sp2 Miss Anderson 9s/Cm2 Mrs Heale 9s/Sc1a Mr Watts 9s/Sc2a Mr Borthwick 9s/Sc4a Mrs Calcutt 9s/Sc3b Mrs Hedge	9s/Ma1 Mrs Moore 9s/Ma2 Mr Ellis 9s/Ma3 Mr Lau 9s/Ma4 Mrs Taylor 9s/Ma5 Miss Anderson-Brown 9s/Sc4b Miss Watkins 9s/Sc2a Mr Borthwick
<b>C: 2pm – 3pm</b>	9r/En1 Miss Macpherson 9r/En2 Miss Heeley 9r/En3 Ms Perchard 9r/En4 Miss Burt 9s/Hi1 Mr Pearce 9s/Hi2 Mrs Ling 9s/Gg1 Mr Davies 9s/Gg2 Mrs Squires 9s/Gg3 Mrs Gourlay	9r/Hi1 Mrs Harvey 9r/Hi2 Mrs Preston 9s/Sc2b Mr Catchpole 9s/Sc5b Miss Crowley 9s/Sc4a Mrs Calcutt	9r/It1 Mrs Southgate 9r/Cp1 Mr Ngai	9r/It2 Mr Ngai 9r/It3 Miss Rooney 9r/Cm1 Mr Davies	9a/Te1 Mrs Ryan 9a/Te2 Miss Harwood 9a/Fd1 Mr Lincoln 9a/Re1 Mrs Upton 9a/Ar1 Miss Flack 9a/At1 Miss Fisher 9a/Pg1 Mrs Carter 9a/Ss1 Mr Stoltz 9a/So1 Mrs Heale 9a/Mu1 Mr Green 9a/Dr1 Mrs Seager 9a/Fi1 Mr Cole
<b>D: 3pm – 4pm</b>			9c/De1 Ms Sparrow 9c/Sp1 Mr Dunne		

**Tuesday Timings: Session B – 10.45am – 11.45am / C – 1.30pm – 2.30pm**

**Week 2.1**

Session and Time	Monday	Tuesday	Wednesday	Thursday	Friday
<b>A: 8.35am – 9.35am</b>	9r/En1 Miss Macpherson 9r/En2 Miss Heeley 9r/En3 Ms Perchard 9r/En4 Miss Burt 9s/Hi1 Mr Pearce 9s/Hi2 Mrs Ling 9s/Gg1 Mr Davies 9s/Gg2 Mrs Squires 9s/Gg3 Mrs Gourlay	9s/Ma1 Mrs Moore 9s/Ma2 Mr Ellis 9s/Ma3 Mr Lau 9s/Ma4 Mrs Taylor 9s/Ma5 Miss Anderson- Brown 9r/Cm4 Mr Davies	9s/En1 Miss Heeley 9s/En2 Miss Burt 9s/En3 Ms O'Connor 9s/En4 Mr Cooper 9s/En5 Miss Macpherson	9s/Pe – PE STAFF 9r/Scb2 Mrs Jolly	9a/Te1 Mrs Ryan 9a/Te2 Mrs Harwood 9a/Fo1 Mr Lincoln 9a/Ar1 Miss Flack 9a/At1 Miss Fisher 9a/Pg1 Mrs Carter 9a/Ss1 Mr Stoltz 9a/So1 Mrs Heale
<b>B: 10.55am – 11.55am</b>	9b/Ar1 Miss Flack 9b/At1 Miss Fisher 9b/Pg1 Mrs Carter 9b/Ss1 Mr Ellis 9b/Ss1 Mr Gibbons	9B/Te2 Mr Davies 9B/Te3 Mrs Calver 9B/Fo1 Mr Lincoln 9B/Bs1 Mr Witts	9s/lt1 Miss Rooney 9s/lt2 Mr Ngai 9r/Hi1 Mrs Harvey 9r/Hi2 Mrs Preston 9r/Gg1 Ms Freaney 9r/Gg2 Mr Davies 9s/Cm5 Mr Cole	9r/Sc1b Mr Catchpole 9r/Sc2a Mr James 9r/Sc3b Mrs Hedge 9r/Sc4b Mrs Wolsey 9s/Sc1a Mr Watts 9s/Sc4b Miss Watkins 9s/Sc3a Miss Crowley	9s/Sp1 Mr Enticott 9s/Sp2 Miss Anderson 9s/Sp3 Mr Dunne
<b>C: 2pm – 3pm</b>	9b/Cc1 Mrs Smyth 9b/Dr1 Mrs Seager	9r/Fr1 Mrs Scarborough 9r/Fr2 Mr Dunne 9r/Sp1 Ms Sparrow 9r/Sp2 Miss Anderson	9s/De1 Mrs Jarrald 9s/De2 Miss Keeling 9r/Cm3 Mr Cole	9r/Ma1 Mrs Bidle 9r/Ma2 Mr Ellis 9r/Ma3 Mrs Kahler 9r/Ma4 Mr Moore 9s/Sc2b Mr Catchpole 9s/Sc2a Mr Borthwick 9s/Sc4a Mrs Calcutt	
<b>D: 3pm – 4pm</b>			9c/De1 Ms Sparrow 9c/Sp1 Mr Dunne		

**Tuesday Timings: Session B – 10.45am – 11.45am / C – 1.30pm – 2.30pm**

**Week 2.2**

Session and Time	Monday	Tuesday	Wednesday	Thursday	Friday
<b>A: 8.35am – 9.35am</b>	9B/Bs1 Mr Dickerson 9B/Te2 Mr Davies 9B/Te3 Mrs Calver 9B/Fo1 Mr Lincoln 9b/Ar1 Miss Flack 9b/At1 Miss Fisher 9b/Pg1 Mrs Daniels 9b/Cc1 Mrs Smyth	9s/De1 Mrs Jarrald 9s/De2 Miss Keeling 9s/Sp1 Mr Enticott 9s/Sp2 Miss Anderson 9s/Sp3 Mr Dunne 9r/Sc1a Mrs Cosham 9r/Sc4a Miss Hibbitt	9s/Cp1 Miss Rooney 9s/lt3 Mr Dickerson	9s/Ma1 Mrs Moore 9s/Ma2 Mr Ellis 9s/Ma3 Mr Lau 9s/Ma4 Mr Moore 9s/Ma5 Miss Anderson- Brown 9r/Sc1a Mrs Cosham 9r/Sc3a Miss Crowley	9s/Gg1 Mr Davies 9s/Gg2 Mrs Squires 9s/Gg3 Mrs Gourlay 9r/Pe – PE STAFF

	9b/Ss1 Mr Ellis 9b/Ss1 Mr Gibbons 9b/Dr1 Mrs Seager				
<b>B: 10.55am – 11.55am</b>	9r/Ma1 Mrs Moore 9r/Ma2 Mr Kettle 9r/Ma3 Mrs Kahler 9r/Ma4 Mr Moore 9s/Sc1b Mrs Ottaway 9s/Sc5b Miss Crowley		9a/So1 Mrs Heale 9a/Mu1 Mr Green 9a/Dr1 Mrs Seager 9a/Fi1 Mr Cole	9s/It2 Mr Ngai 9s/It4 Mrs Southgate 9s/Cm1 Mr Cole 9s/Cm4 Mr Davies	9a/Re1 Mrs Upton 9a/Ar1 Miss Flack 9a/At1 Miss Fisher 9a/Pg1 Mrs Carter 9a/Ss1 Mr Stoltz
<b>C: 2pm – 3pm</b>	9r/En1 Miss Macpherson 9r/En2 Miss Heeley 9r/En3 Ms Perchard 9r/En4 Miss Burt 9s/Hi1 Mr Pearce 9s/Hi2 Mrs Ling	9r/Hi1 Mrs Harvey 9r/Hi2 Mrs Preston 9r/Gg1 Ms Freaney 9r/Gg2 Mr Davies 9s/Sc3b Mrs Hedge	9s/En1 Miss Heeley 9s/En2 Miss Burt 9s/En3 Ms O'Connor 9s/En4 Mr Cooper 9s/En5 Miss Macpherson 9r/It1 Mrs Southgate 9r/Cp1 Mr Ngai	9r/It2 Mr Ngai 9r/It3 Miss Rooney 9r/Cm2 Mr Cole	9a/Fo1 Mr Lincoln 9a/Te1 Mrs Ryan 9a/Te2 Miss Harwood 9a/Mu1 Mr Green 9a/Dr1 Mrs Seager 9a/Fi1 Mr Cole
<b>D: 3pm – 4pm</b>			9c/De1 Ms Sparrow 9c/Sp1 Mr Dunne		

**Tuesday Timings: Session B – 10.45am – 11.45am / C – 1.30pm – 2.30pm**

## Appendix 3d: Access to Teaching Staff in the event of Scenario B

### Year 10: Live Q&A with Subject Teachers

### Scenario B – Partial Lockdown (Class or Year Group Absences)

Please note that all Q&A sessions with teaching staff take place at the start of the Session and last for one hour. Timings as indicated. Students who do not wish to speak in front of the group may type questions into the chat function and their teacher will respond.

#### Week 1.1

Session and Time	Monday	Tuesday	Wednesday	Thursday	Friday
<b>A: 8.35am – 9.35am</b>	10r/Ph1 Mrs Calcutt 10r/Sc2a Mr James 10r/Bi2 Mrs Ottaway 10r/Sc1a Mrs Cosham 10r/Sc3a Miss Teverson 10s/De1 Mrs Keeling 10s/De2 Mr Enticott 10s/De3 Ms Sparrow	10r/Pe – PE Staff	10r/Fr1 Mrs Scarborough 10r/Fr2 Mrs Keeling 10r/Fr3 Mr Dunne 10r/Sp1 Miss Anderson 10r/Sp2 Miss Smith	10A/Bs1 Mr Dickerson 10A/So1 Mrs Garside 10A/Gp1 Mr Davies 10A/Rm2 Miss Bentley 10A/Rm1 Miss Harwood	10B/Dr1 Miss Aldridge 10r/Ph2 Mr Borthwick 10r/Sc3b Mrs Hedge 10r/Ch1 Mr Watts 10r/Sc2b Mrs Ottaway 10r/Sc1b Mr Catchpole
<b>B: 10.55am – 11.55am</b>	10B/Fi1 Mr Cole 10B/Dr1 Miss Aldridge 10B/Mu1 Mr Garner 10B/Ar1 Mrs Carter 10B/Pg1 Miss Daniels 10B/Ss1 Miss Eke 10B/Ss2 Mr Simms 10B/So1 Mrs Heale 10B/Rm2 Miss Bentley	10s/Ph1 Mr Borthwick 10s/lt1 Mrs Brownhill 10s/lt4 Mrs Southgate 10s/lt2 Mr Ngai 10s/Cp1 Miss Rooney 10s/lt3 Mr Dickerson	10r/Hi1 Mrs Preston 10r/Hi2 Mrs Ling 10r/Hi3 Mr Pearce 10s/Ch2 Mr Watts 10s/Sc1b Mr Catchpole 10s/Sc3a Miss Teverson	10s/Sc3b Mrs Hedge 10s/Sc1a Mrs Cosham 10s/Sc2a Mrs Wolsey 10s/Bi2 Miss Watkins	10r/Ma1 Mrs Kahler 10r/Ma2 Mr Moore 10r/Ma3 Mr Scarborough 10r/Ma4 Mr Ellis 10r/Ma5 Mr Lau 10s/Sp1 Miss Smith 10s/Sp2 Miss Anderson
<b>C: 2pm – 3pm</b>	10s/Hi1 Mr Rowe 10s/Hi2 Mr Mulcahy 10s/Gg1 Mrs Gourlay 10s/Gg2 Mrs Freaney 10s/Gg3 Mrs Squires	10s/Ma1 Mr Scarborough 10s/Ma2 Mr Longfield 10s/Ma3 Mrs Taylor 10s/Ma4 Mr Moore 10s/Ma5 Miss Anderson-Brown	10A/Dr1 Mrs Hayes 10A/Mu1 Mr Green 10A/At1 Mrs Carter 10A/Ar1 Miss Flack 10A/Pg1 Mrs Pinnington 10A/Cc1 Mrs Smyth 10A/Ss1 Mr Savage 10A/So1 Mrs Heale 10A/Fd1 Mr Lincoln	10s/En1 Mrs O'Connor 10s/En2 Ms Perchard 10s/En3 Miss Macpherson 10s/En4 Miss Heeley 10s/En5 Miss Burt 10r/Bi1 Miss Watkins	10r/Gg1 Mr Davies 10r/Gg2 Mr Harrison
<b>D: 3pm – 4pm</b>	10C/Sp1 Miss Smith 10C/Fr1 Mrs Keeling			10 Further Maths KKA	

**Tuesday Timings: Session B – 10.45am – 11.45am / C – 1.30pm – 2.30pm**



**Week 1.2**

Session and Time	Monday	Tuesday	Wednesday	Thursday	Friday
<b>A: 8.35am – 9.35am</b>	10s/Ma1 Mr Scarborough 10s/Ma2 Mr Longfield 10s/Ma3 Mrs Taylor 10s/Ma4 Mr Moore 10s/Ma5 Miss Anderson-Brown	10s/Ch1 Mr James 10s/Sc1b Mr Catchpole	10s/Hi1 Mr Rowe 10s/Hi2 Mr Mulcahy 10s/Gg1 Mrs Gourlay 10s/Gg2 Mrs Freaney 10s/Gg3 Mrs Squires 10r/Ph1 Mrs Calcutt 10r/Ch2 Mr James 10r/Sc1a Mrs Cosham 10r/Sc3a Miss Teverson	10s/Sp1 Miss Smith 10s/Sp2 Miss Anderson 10r/En1 Mrs Everett 10r/En2 Miss Sacre 10r/En3 Ms Gosney 10r/En4 Mrs Hill 10r/En5 Mrs Jones	10B/Fi1 Mr Cole 10B/Mu1 Mr Garner 10B/Ar1 Mrs Carter 10B/Ss1 Miss Eke 10B/Ss2 Mr Simms 10B/So1 Mrs Heale 10B/Rm2 Miss Bentley
<b>B: 10.55am – 11.55am</b>	10r/Sc2a Mr James 10s/De1 Mrs Keeling 10s/De2 Mr Enticott 10s/De3 Ms Sparrow	10s/lt1 Mrs Brownhill 10s/lt4 Mrs Southgate 10s/lt2 Mr Ngai 10s/Cp1 Miss Rooney 10B/Rm1 Mrs Ryan 10s/lt3 Mr Dickerson		10A/Dr1 Mrs Hayes 10A/Mu1 Mr Green 10A/At1 Mrs Carter 10A/Ar1 Miss Flack 10A/Pg1 Mrs Pinnington 10A/Cc1 Mrs Smyth 10A/Bs1 Mr Dickerson 10A/Ss1 Mr Savage 10A/Rm2 Miss Bentley 10A/Fd1 Mr Lincoln	10s/De1 Mrs Keeling 10s/De2 Mr Enticott 10s/De3 Ms Sparrow 10s/Sp1 Miss Smith 10s/Sp2 Miss Anderson
<b>C: 2pm – 3pm</b>	10s/Ph2 Mrs Calcutt 10s/Bi1 Mrs Ottaway 10s/Sc2b Miss Hibbitt 10r/Fr1 Mrs Scarborough 10r/Fr2 Mrs Keeling 10r/Fr3 Mr Dunne 10r/Sp1 Miss Anderson 10r/Sp2 Miss Smith	10B/At1 Miss Fisher 10B/Re1 Mrs Upton 10B/Bs1 Mr Witts 10B/Fd1 Mr Lincoln	10r/Hi1 Mrs Preston 10r/Hi2 Mrs Ling 10r/Hi3 Mr Pearce 10r/Gg1 Mr Davies 10r/Gg2 Mr Harrison 10s/Pe – PE Staff	10r/Sc2b Mrs Ottaway 10r/Sc1b Mr Catchpole	10r/Sc3b Mrs Hedge
<b>D: 3pm – 4pm</b>	10C/Sp1 Miss Smith 10C/Fr1 Mrs Keeling				

**Tuesday Timings: Session B – 10.45am – 11.45am / C – 1.30pm – 2.30pm**

**Week 2.1**

Session and Time	Monday	Tuesday	Wednesday	Thursday	Friday
<b>A: 8.35am – 9.35am</b>	10B/Dr1 Miss Aldridge 10B/Pg1 Miss Daniels 10B/At1 Miss Fisher 10B/Re1 Mrs Upton 10B/Bs1 Mr Dickerson 10B/Fd1 Mr Lincoln	10s/Ph2 Mrs Calcutt 10s/Sc3b Mrs Hedge 10s/Sc2b Miss Hibbitt	10r/Ma1 Mrs Kahler 10r/Ma2 Mr Moore 10r/Ma3 Mr Scarborough 10r/Ma4 Mr Ellis 10r/Ma5 Mr Lau 10s/Hi1 Mr Rowe	10s/Sc2a Mrs Wolsey 10s/Sc3a Miss Teverson	10s/Sc1a Mrs Cosham 10r/Cp1 Mrs Southgate

	10B/Rm1 Mrs Ryan		10s/Hi2 Mr Mulcahy		
<b>B: 10.55am – 11.55am</b>	10s/En1 Mrs O'Connor 10s/En2 Ms Perchard 10s/En3 Miss Macpherson 10s/En4 Miss Heeley 10s/En5 Miss Burt	10r/lt1 Mrs Brownhill 10r/Cp2 Mr Ngai 10r/lt2 Miss Rooney 10r/lt3 Mr Dickerson 10s/PE – PE Staff	10A/Dr1 Mrs Hayes 10A/Mu1 Mr Green 10A/At1 Mrs Carter 10A/Ar1 Miss Flack 10A/Pg1 Mrs Pinnington 10A/Cc1 Mrs Smyth		10r/Ch1 Mr Watts 10r/Sc1a Mrs Cosham 10r/Sc3a Miss Teverson
<b>C: 2pm – 3pm</b>	10s/Gg1 Mrs Gourlay 10s/Gg2 Mrs Freaney 10s/Gg3 Mrs Squires 10r/Fr1 Mrs Scarborough 10r/Fr2 Mrs Keeling 10r/Fr3 Mr Dunne 10r/Sp1 Miss Anderson 10r/Sp2 Miss Smith	10s/Ma1 Mr Scarborough 10s/Ma2 Mr Longfield 10s/Ma3 Mrs Taylor 10s/Ma4 Mr Moore 10s/Ma5 Miss Anderson-Brown 10r/Ch2 Mr James	10A/Ss1 Mr Savage 10A/So1 Mrs Heale 10A/Gp1 Mr Davies 10A/Fd1 Mr Lincoln 10A/Rm1 Miss Harwood	10s/En1 Mrs O'Connor 10s/En2 Ms Perchard 10s/En3 Miss Macpherson 10s/En4 Miss Heeley 10s/En5 Miss Burt 10r/Ph2 Mr Borthwick 10r/Sc3b Mrs Hedge 10r/Sc2a Mr James	10r/Hi1 Mrs Preston 10r/Hi2 Mrs Ling 10r/Hi3 Mr Pearce 10r/Gg1 Mr Davies 10r/Gg2 Mr Harrison 10s/lt1 Mrs Brownhill 10s/lt4 Mrs Southgate
<b>D: 3pm – 4pm</b>	10C/Sp1 Miss Smith 10C/Fr1 Mrs Keeling			10 Further Maths KKA	

**Tuesday Timings: Session B – 10.45am – 11.45am / C – 1.30pm – 2.30pm**

## Week 2.2

Session and Time	Monday	Tuesday	Wednesday	Thursday	Friday
<b>A: 8.35am – 9.35am</b>	10s/En1 Mrs O'Connor 10s/En2 Ms Perchard 10s/En3 Miss Macpherson 10s/En4 Miss Heeley 10s/En5 Miss Burt	10r/lt1 Mrs Brownhill 10r/Cp2 Mr Ngai 10r/lt2 Miss Rooney 10r/lt3 Mr Dickerson	10r/Ma1 Mrs Kahler 10r/Ma2 Mr Moore 10r/Ma3 Mr Scarborough 10r/Ma4 Mr Ellis 10r/Ma5 Mr Lau 10s/Sc3b Mrs Hedge 10s/Bi2 Miss Watkins	10A/Cc1 Mrs Smyth 10A/Gp1 Mr Davies 10A/Rm2 Miss Bentley 10A/Rm1 Miss Harwood	10s/Ch1 Mr James 10s/Sc1a Mrs Cosham 10r/Cp1 Mrs Southgate
<b>B: 10.55am – 11.55am</b>	10r/En1 Mrs Everett 10r/En2 Miss Sacre 10r/En3 Ms Gosney 10r/En4 Mrs Hill 10r/En5 Mrs Jones 10s/Hi1 Mr Rowe 10s/Hi2 Mr Mulcahy 10s/Gg1 Mrs Gourlay 10s/Gg2 Mrs Freaney 10s/Gg3 Mrs Squires	10B/Mu1 Mr Garner 10B/Ar1 Mrs Carter 10B/At1 Miss Fisher 10B/Re1 Mrs Upton 10B/Ss1 Miss Eke 10B/Ss2 Mr Simms 10B/So1 Mrs Heale	10s/Ph1 Mr Borthwick 10s/Ch2 Mr Watts 10r/Sc2a Mr James 10r/Bi2 Mrs Ottaway 10s/Sc2a Mrs Wolsey 10r/Bi1 Miss Watkins 10s/Sc3a Miss Teverson		
<b>C: 2pm – 3pm</b>	10s/Ph2 Mrs Calcutt 10s/Bi1 Mrs Ottaway	10B/Fi1 Mr Cole 10B/Pg1 Miss Daniels	10r/Hi1 Mrs Preston 10r/Hi2 Mrs Ling	10r/Ch2 Mr James 10r/Sc2b Mrs Ottaway	10r/Sc3b Mrs Hedge 10s/lt2 Mr Ngai

	10s/Sc1b Mr Catchpole 10s/Sc2b Miss Hibbitt 10r/Fr1 Mrs Scarborough 10r/Fr2 Mrs Keeling 10r/Fr3 Mr Dunne 10r/Sp1 Miss Anderson 10r/Sp2 Miss Smith	10B/Rm2 Miss Bentley 10B/Fd1 Mr Lincoln 10B/Rm1 Mrs Ryan	10r/Hi3 Mr Pearce	10r/Sc1b Mr Catchpole 10B/Bs1 Mr Witts	10s/Cp1 Miss Rooney
D: 3pm – 4pm	10C/Sp1 Miss Smith 10C/Fr1 Mrs Keeling				

**Tuesday Timings: Session B – 10.45am – 11.45am / C – 1.30pm – 2.30pm**

## Appendix 3e: Access to Teaching Staff in the event of Scenario B

### Year 11: Live Q&A with Subject Teachers

#### Scenario B – Partial Lockdown (Class or Year Group Absences)

Please note that all Q&A sessions with teaching staff take place at *the start of the Session* and last for one hour. Timings as indicated. Students who do not wish to speak in front of the group may type questions into the chat function and their teacher will respond.

#### Week 1.1

Session and Time	Monday	Tuesday	Wednesday	Thursday	Friday
<b>A: 8.35am – 9.35am</b>	11r/Hi1 Mr Pearce 11r/Hi2 Mrs Ling 11r/Gg1 Mrs Squires 11r/Gg2 Ms Freaney 11r/Gg3 Mrs Gourlay 11s/Pe – PE STAFF	11s/lt1 Mr Dickerson 11s/lt2 Mrs Brownhill 11s/lt3 Mr Ngai 11s/Cp1 Miss Rooney 11s/Cp2 Mrs Southgate 11r/Ch1 Mrs Hedge 11r/Ph2 Mrs Calcutt	11s/Hi1 Mr Rowe 11s/Hi2 Mrs Ling 11s/Hi3 Mr Mulcahy 11s/Gg1 Mr Harrison 11s/Gg2 Mr Davies 11s/Gg3 Ms Freaney 11r/Pe – PE STAFF	11s/Ch2 Mr Watts 11s/Ph1 Mrs Cosham 11s/Sc2b Mr Catchpole 11s/Sc3a Miss Watkins 11s/Sc1b Mrs Hedge	11r/Ma1 Mr Kettle 11r/Ma2 Mr Ellis 11r/Ma3 Mr Lau 11r/Ma4 Mr Scarborough 11r/Ma5 Mrs Bidle 11s/De1 Mrs Jarrald 11s/De2 Mr Enticott 11s/De3 Miss Sparrow 11s/Sp1 Mr Dunne 11s/Sp2 Miss Anderson
<b>B: 10.55am – 11.55am</b>	11s/En1 Miss Perchard 11s/En2 Miss Heeley 11s/En3 Miss Burt 11s/En4 Mrs Hill 11s/En5 Miss Sacre 11r/Bi2 Mr Moore 11r/Ch1 Mrs Hedge 11r/Sc1a Mrs Cosham 11r/Sc2a Mrs Jolly 11r/Sc3a Miss Watkins	11a/Rm1 Mrs Ryan 11a/Rm2 Miss Bentley 11A/Gp1 Ms Calver 11A/Pg1 Mr Moulton 11A/Ar1 Miss Daniels 11A/At1 Mrs Carter 11A/Cc1 Mrs Smyth 11a/Ss1 Mr Stoltz 11a/Ss2 Miss Eke 11a/So1 Mrs Garside 11a/Bs1 Mr Witts 11a/Dr1 Mrs Seager 11a/Mu1 Mr Garner	11B/Fo1 Mr Lincoln 11B/Rm1 Miss Bentley 11B/Rm2 Miss Harwood 11B/Gp1 Mrs Calver 11B/Hi1 Mrs Harvey 11B/Ss1 Mrs Bloom 11B/So1 Mrs Heale 11B/Dr1 Mrs Hayes 11b/Fi1 Mr Cole 11B/Mu1 Mr Green		
<b>C: 2pm – 3pm</b>	11r/En1 Mrs Jones 11r/En2 Mrs Macpherson 11r/En3 Mrs Everett 11r/En4 Mrs O'Connor 11r/En5 Mrs Gosney 11s/Ch2 Mr Watts		11s/Bi1 Miss Watkins 11s/Bi2 Ms Calne 11s/Sc1a Mrs Jolly 11s/Sc3b Mr James	11B/Ar1 Mr Moulton 11B/Pg1 Miss Daniels 11B/At1 Mrs Carter 11B/Bs1 Mr Dickerson	11r/Fr1 Mrs Keeling 11r/Fr2 Mrs Barrell 11r/Fr3 Mr Dunne 11r/Sp1 Miss Anderson 11r/Sp2 Miss Smith 11s/Sc2a Mrs Cosham

D: 3pm – 4pm			11C/Sp1 Miss Anderson	
--------------	--	--	-----------------------	--

**Tuesday Timings: Session B – 10.45am – 11.45am / C – 1.30pm – 2.30pm**

**Week 1.2**

Session and Time	Monday	Tuesday	Wednesday	Thursday	Friday
<b>A: 8.35am – 9.35am</b>	11s/Pe – PE STAFF 11r/Bi2 Mr Moore 11r/Ch1 Mrs Hedge 11r/Sc2a Mrs Jolly		11s/Ma1 Miss Anderson-Brown 11s/Ma2 Mr Moore 11s/Ma3 Mrs Moore 11s/Ma4 Mrs Taylor 11s/Ma5 Mr Longfield 11r/Pe – PE STAFF	11r/Ma1 Miss Anderson-Brown 11r/Ma2 Mr Ellis 11r/Ma3 Mr Lau 11r/Ma4 Mr Scarborough 11r/Ma5 Mrs Bidle 11s/Ch1 Mrs Wolsey 11s/Sc2a Mrs Cosham 11s/Sc3a Miss Watkins 11s/Sc1b Mrs Hedge	11s/Sp1 Mr Dunne 11s/Sp2 Miss Anderson 11r/Ch2 Mr Watts 11r/Sc1a Mrs Cosham 11r/Sc3a Miss Watkins
<b>B: 10.55am – 11.55am</b>	11r/En1 Mrs Jones 11r/En2 Mrs Macpherson 11r/En3 Mrs Everett 11r/En4 Mrs O'Connor 11r/En5 Mrs Gosney 11s/Hi1 Mr Rowe 11s/Hi2 Mrs Ling 11s/Hi3 Mr Mulcahy 11s/Gg1 Mr Harrison 11s/Gg2 Mr Davies 11s/Gg3 Ms Freaney	11s/En1 Miss Perchard 11s/En2 Miss Heeley 11s/En3 Miss Burt 11s/En4 Mrs Hill 11s/En5 Miss Sacre 11r/Ph1 Mr Borthwick 11r/Sc2a Mrs Jolly	11B/Fo1 Mr Lincoln 11B/Fo1 Mr Lincoln 11B/Rm1 Miss Bentley 11B/Rm2 Miss Harwood 11B/Gp1 Mrs Calver 11B/Ar1 Mr Moulton 11B/Pg1 Miss Daniels 11B/At1 Mrs Carter 11B/Hi1 Mrs Harvey 11B/Ss1 Mrs Bloom 11B/So1 Mrs Rayner 11B/Bs1 Mr Dickerson 11B/Dr1 Mrs Hayes 11b/Fi1 Mr Cole 11B/Mu1 Mr Garner	11r/En1 Mrs Jones 11r/En2 Mrs Macpherson 11r/En3 Mrs Everett 11r/En4 Mrs O'Connor 11r/En5 Mrs Gosney	11s/Bi1 Miss Watkins 11s/Bi2 Ms Calne 11s/Sc2b Mr Catchpole 11s/Sc3b Mr James
<b>C: 2pm – 3pm</b>	11A/Pg1 Mr Moulton 11A/Ar1 Miss Daniels 11A/At1 Miss Fisher 11A/Cc1 Mrs Smyth 11a/Ss1 Mr Stoltz 11a/Ss2 Miss Eke 11a/So1 Mrs Garside 11a/Bs1 Mr Dickerson 11a/Dr1 Mrs Seager 11a/Mu1 Mr Green 11s/Sc1a Mrs Jolly	11r/lt1 Mrs Southgate 11r/lt2 Miss Rooney 11r/lt3 Mrs Brownhill 11r/lt4 Mr Dickerson 11r/Cp1 Mr Ngai	11s/De1 Mrs Jarrald 11s/De2 Mr Enticott 11s/De3 Miss Sparrow 11r/Bi1 Ms Calne 11r/Ch2 Mr Watts 11s/Sc1a Mrs Jolly	11a/Rm1 Mrs Ryan 11a/Rm2 Miss Bentley 11A/Gp1 Ms Calver 11r/Sc1b Mr Catchpole 11r/Sc2b Mrs Hedge 11r/Sc3b Mr James	11r/Hi1 Mr Pearce 11r/Hi2 Mrs Ling 11r/Gg1 Mrs Squires 11r/Gg2 Ms Freaney 11r/Gg3 Mrs Gourlay

D: 3pm – 4pm			11C/Sp1 Miss Anderson	
--------------	--	--	-----------------------	--

**Tuesday Timings: Session B – 10.45am – 11.45am / C – 1.30pm – 2.30pm**

**Week 2.1**

Session and Time	Monday	Tuesday	Wednesday	Thursday	Friday
<b>A: 8.35am – 9.35am</b>	11s/Ma1 Miss Anderson-Brown 11s/Ma2 Mr Moore 11s/Ma3 Mrs Moore 11s/Ma4 Mrs Taylor 11s/Ma5 Mr Longfield 11s/Sc1a Mrs Jolly	11a/Rm1 Mrs Ryan 11a/Rm2 Miss Bentley 11A/Gp1 Ms Calver 11A/Pg1 Mr Moulton 11A/Ar1 Miss Daniels 11A/At1 Mrs Carter 11A/Cc1 Mrs Smyth 11a/Ss1 Mr Stoltz 11a/Ss2 Miss Eke 11a/So1 Mrs Garside 11a/Bs1 Mr Dickerson 11a/Dr1 Mrs Seager	11r/Fr1 Mrs Keeling 11r/Fr2 Mrs Barrell 11r/Fr3 Mr Dunne 11r/Sp1 Miss Anderson 11r/Sp2 Miss Smith 11s/Ch1 Mrs Wolsey 11s/Sc3a Miss Watkins	11r/Bi2 Mr Moore 11r/Ph1 Mr Borthwick 11r/Sc1a Mrs Cosham 11r/Sc3a Miss Watkins	11s/Ma1 Miss Anderson-Brown 11s/Ma2 Mr Moore 11s/Ma3 Mrs Moore 11s/Ma4 Mrs Taylor 11s/Ma5 Mr Longfield
<b>B: 10.55am – 11.55am</b>	11r/Ma1 Mr Kettle 11r/Ma2 Mr Moore 11r/Ma3 Mr Lau 11r/Ma4 Mr Scarborough 11r/Ma5 Mrs Bidle 11s/De1 Mrs Jarrald 11s/De2 Mr Enticott 11s/De3 Miss Sparrow 11s/Sp1 Mr Dunne 11s/Sp2 Miss Anderson	11r/En1 Mrs Jones 11r/En2 Mrs Macpherson 11r/En3 Mrs Everett 11r/En4 Mrs O'Connor 11r/En5 Mrs Gosney 11s/Hi1 Mr Rowe 11s/Hi2 Mrs Ling 11s/Hi3 Mr Mulcahy 11s/Gg1 Mr Harrison 11s/Gg2 Mr Davies 11s/Gg3 Ms Freaney	11r/Bi1 Ms Calne 11r/Ph2 Mrs Calcutt 11r/Sc1a Mrs Cosham 11r/Sc2a Mrs Jolly 11r/Sc3b Mr James	11B/Fo1 Mr Lincoln 11B/Fo1 Mr Lincoln 11B/Rm1 Miss Bentley 11B/Rm2 Miss Harwood 11B/Gp1 Mrs Calver 11B/Hi1 Mrs Harvey 11B/Ss1 Mrs Bloom 11B/So1 Mrs Heale	11r/Sc1b Mr Catchpole 11r/Sc2b Mrs Hedge 11r/Sc3b Mr James
<b>C: 2pm – 3pm</b>	11s/Sc2a Mrs Cosham 11s/Sc3b Mr James	11s/En1 Miss Perchard 11s/En2 Miss Heeley 11s/En3 Miss Burt 11s/En4 Mrs Hill 11s/En5 Miss Sacre	11r/Hi1 Mr Pearce 11r/Hi2 Mrs Ling 11r/Gg1 Mrs Squires 11r/Gg2 Ms Freaney 11r/Gg3 Mrs Gourlay 11s/Ph1 Mrs Cosham 11s/Sc2b Mr Catchpole	11B/Ar1 Mr Moulton 11B/Pg1 Miss Daniels 11B/At1 Mrs Carter 11B/Bs1 Mr Dickerson 11B/Dr1 Mrs Hayes 11b/Fi1 Mr Cole 11B/Mu1 Mr Green	11s/Bi1 Miss Watkins 11s/Bi2 Ms Calne 11s/Sc1b Mrs Hedge
D: 3pm – 4pm			11C/Sp1 Miss Anderson		

**Tuesday Timings: Session B – 10.45am – 11.45am / C – 1.30pm – 2.30pm**

**Week 2.2**

Session and Time	Monday	Tuesday	Wednesday	Thursday	Friday
<b>A: 8.35am – 9.35am</b>	11r/Hi1 Mr Pearce 11r/Hi2 Mrs Ling 11s/Sc2b Mr Catchpole 11s/Sc3b Mr James	11r/Ma1 Mr Kettle 11r/Ma2 Mr Ellis 11r/Ma3 Mr Lau 11r/Ma4 Mr Scarborough 11r/Ma5 Mrs Bidle 11s/Hi1 Mr Rowe 11s/Hi2 Mrs Ling 11s/Hi3 Mr Mulcahy 11s/Gg1 Mr Harrison 11s/Gg2 Mr Davies 11s/Gg3 Ms Freaney	11B/Fo1 Mr Lincoln 11B/Fo1 Mr Lincoln 11B/Rm1 Miss Bentley 11B/Rm2 Miss Harwood 11B/Gp1 Mrs Calver 11B/Ar1 Mr Moulton 11B/Pg1 Miss Daniels 11B/At1 Mrs Carter 11B/Hi1 Mrs Harvey 11B/Ss1 Mrs Bloom 11B/So1 Mrs Rayner 11B/Bs1 Mr Witts 11B/Dr1 Mrs Hayes 11b/Fi1 Mr Cole 11B/Mu1 Mr Garner	11s/En1 Miss Perchard 11s/En2 Miss Heeley 11s/En3 Miss Burt 11s/En4 Mrs Hill 11s/En5 Miss Sacre 11r/Ph1 Mr Borthwick 11r/Ph2 Mrs Calcutt 11r/Sc3a Miss Watkins	11s/Ma1 Miss Anderson-Brown 11s/Ma2 Mr Moore 11s/Ma3 Mrs Moore 11s/Ma4 Mrs Taylor 11s/Ma5 Mr Kettle 11r/Fr1 Mrs Keeling 11r/Fr2 Mrs Barrell 11r/Fr3 Mr Dunne 11r/Sp1 Miss Anderson 11r/Sp2 Miss Smith
<b>B: 10.55am – 11.55am</b>	11A/Pg1 Mr Moulton 11A/Ar1 Miss Daniels 11A/At1 Miss Fisher 11A/Cc1 Mrs Smyth 11a/So1 Mrs Garside 11a/Bs1 Mr Dickerson 11a/Dr1 Mrs Seager	11r/Fr1 Mrs Keeling 11r/Fr2 Mrs Barrell 11r/Fr3 Mr Dunne 11r/Sp1 Miss Anderson 11r/Sp2 Miss Smith 11s/Ch2 Mr Watts 11s/Ph1 Mrs Cosham		11s/Ch1 Mrs Wolsey 11s/Sc2a Mrs Cosham 11s/Sc3a Miss Watkins 11s/Sc1b Mrs Hedge	11s/lt1 Mr Dickerson 11s/lt2 Mrs Brownhill 11s/lt3 Mr Ngai 11s/Cp1 Miss Rooney 11s/Cp2 Mrs Southgate
<b>C: 2pm – 3pm</b>	11a/Rm1 Mrs Ryan 11a/Rm2 Miss Bentley 11A/Gp1 Ms Calver 11a/Ss1 Mr Stoltz 11a/Ss2 Miss Eke 11a/Mu1 Mr Green	11r/lt1 Mrs Southgate 11r/lt2 Miss Rooney 11r/lt3 Mrs Brownhill 11r/lt4 Mr Dickerson 11r/Cp1 Mr Ngai	11s/De1 Mrs Jarrald 11s/De2 Mr Enticott 11s/De3 Miss Sparrow 11s/Sp1 Mr Dunne 11s/Sp2 Miss Anderson 11r/Bi1 Ms Calne 11r/Ch2 Mr Watts 11r/Sc1b Mr Catchpole 11r/Sc2b Mrs Hedge 11r/Sc3b Mr James	11a/Mu1 Mr Green	11r/Gg1 Mrs Squires 11r/Gg2 Ms Freaney 11r/Gg3 Mrs Gourlay
<b>D: 3pm – 4pm</b>			11C/Sp1 Miss Anderson		

**Tuesday Timings: Session B – 10.45am – 11.45am / C – 1.30pm – 2.30pm**

## Appendix 3f: Access to Teaching Staff in the event of Scenario B

### Year 12: Live Q&A with Subject Teachers

#### Scenario B – Partial Lockdown (Class or Year Group Absences)

Please note that all Q&A sessions with teaching staff take place at the start of the Session and last for one hour. Timings as indicated. Students who do not wish to speak in front of the group may type questions into the chat function and their teacher will respond.

#### Week 1.1

Session and Time	Monday	Tuesday	Wednesday	Thursday	Friday
<b>A: 8.35am – 9.35am</b>	12E/At1 Miss Fisher 12E/Ma1 Mrs Bidle 12E/Cc1 Mr Rowe 12E/Hi1 Mr Mulcahy 12E/Ph1 Mr Borthwick	12B/Am1 Mrs Carter 12B/Po1 Mr Mulcahy 12B/Pd1 Mrs Ryan	12D/Fi1 Mr Cole 12D/EI1 Miss Burt 12D/Re1 Mrs Upton 12D/Fm1 Mr Lau 12D/Bs1 Mrs George	12A/Ar1 Miss Flack 12A/Gg1 Ms Freaney 12A/Ss1 Mr Simms 12A/Py1 Mrs Edmunds 12A/Bs1 Mrs George 12A/De1 Mrs Jarrald	12C/EI1 Miss Perchard 12C/Ma1 Mrs Moore 12C/Bi1 Mr Moore 12C/Cp1 Mr Dickerson 12C/Fr1 Mrs Keeling
<b>B: 10.55am – 11.55am</b>	12A/Hi1 Mr Pearce 12A/Gg1 Mr Harrison 12A/Ph1 Mrs Calcutt 12A/Ch1 Mr James 12A/Ss1 Mr Savage 12A/Py1 Mrs Matthews	12C/EI1 Mrs Jones 12C/Dr1 Miss Aldridge 12C/Ma1 Mr Scarborough 12C/Gg1 Mrs Squires 12C/Bi1 Mrs Jolly	12E/At1 Mrs Pinnington 12E/Ma1 Mr Moore 12E/Cc1 Mrs Smyth 12E/Ph1 Mrs Calcutt 12E/Py1 Mrs Matthews 12E/So1 Mrs Rayner 12E/Sp1 Miss Smith	12B/Mu1 Mr Garner 12B/Po1 Mr Pearce 12B/Bi1 Ms Calne 12B/Py1 Mrs Edmunds 12B/Pd1 Miss Bentley	12D/EI1 Mrs Everett 12D/Bi1 Mrs Calne
<b>C: 2pm – 3pm</b>	12B/Mu1 Mr Garner 12B/Am1 Mr Moulton 12B/Ma1 Mr Scarborough 12B/Bi1 Mrs Ottaway 12B/Py1 Mrs Matthews	12D/Ma1 Mr Ellis 12D/So1 Mrs Heale 12D/Bs1 Mr Witts	12A/Hi1 Mr Rowe 12A/Ph1 Mr Borthwick 12A/Ch1 Mr Watts 12A/Ss1 Miss Bloom 12A/Bs1 Mr Witts	12C/EI1 Mrs Jones 12C/Dr1 Mrs Seager 12C/Gg1 Mr Harrison 12C/Cp1 Mr Ngai 12C/Ec1 Mr Witts	
<b>D: 3pm – 4pm</b>	12D/Fi1 Mr Cole 12D/EI1 Mrs Everett 12D/Fm1 Mr Longfield 12D/So1 Mrs Rayner	12D/Bi1 Miss Watkins	12B/Ma1 Miss Anderson-Brown	12E/Py1 Mrs Edmunds 12E/So1 Mrs Garside 12E/Pd1 Ms Calver	12A/De1 Mr Enticott

**Tuesday Timings: Session B – 10.45am – 11.45am / C – 1.30pm – 2.30pm**

#### Week 1.2

Session and Time	Monday	Tuesday	Wednesday	Thursday	Friday
<b>A: 8.35am – 9.35am</b>	12E/Cc1 Mrs Smyth 12E/Hi1 Mr Mulcahy	12B/Am1 Mrs Carter 12B/Ma1 Mr Scarborough	12D/Fi1 Mr Cole 12D/Re1 Mrs Upton	12A/Hi1 Mr Pearce 12A/Gg1 Mr Harrison	12C/Dr1 Mrs Seager 12C/Bi1 Mr Moore



		12E/Cc1 Mr Rowe 12B/Bi1 Mrs Ottaway	12D/Ma1 Mr Ellis 12D/So1 Mrs Heale	12A/Ph1 Mrs Calcutt 12A/Py1 Mrs Edmunds	
<b>B: 10.55am – 11.55am</b>	12C/Ma1 Mr Scarborough 12C/Fr1 Mrs Scarborough	12E/At1 Miss Fisher 12E/Hi1 Mrs Harvey 12E/So1 Mrs Garside 12E/Sp1 Miss Smith	12B/Mu1 Mr Dickson 12B/Po1 Mr Mulcahy 12B/Py1 Mrs Edmunds	12D/EI1 Miss Burt 12D/Re1 Mrs Upton 12D/Fm1 Mr Lau 12D/Bi1 Mrs Calne	12A/Hi1 Mr Rowe 12A/Gg1 Ms Freaney 12A/Ph1 Mr Borthwick 12A/Ss1 Mr Simms 12A/Py1 Mrs Matthews
<b>C: 2pm – 3pm</b>	12B/Bi1 Mrs Ottaway 12D/So1 Mrs Rayner 12D/Bs1 Mr Witts	12A/Ch1 Mr James	12C/EI1 Miss Perchard 12C/Dr1 Mrs Seager 12C/Gg1 Mrs Squires	12E/At1 Mrs Pinnington 12E/Ph1 Mr Borthwick 12E/Py1 Mrs Edmunds 12E/Pd1 Miss Harwood	12B/Mu1 Mr Garner 12B/Am1 Mr Moulton 12B/Py1 Mrs Matthews 12B/Pd1 Miss Bentley
<b>D: 3pm – 4pm</b>			12A/Ar1 Miss Flack 12A/Ch1 Mr Watts 12A/Bs1 Mrs George	12C/Cp1 Miss Rooney 12C/Ec1 Mr Witts 12C/Gg1 Mr Harrison	12E/Ma1 Mr Moore

**Tuesday Timings: Session B – 10.45am – 11.45am / C – 1.30pm – 2.30pm**

**Week 2.1**

<b>Session and Time</b>	<b>Monday</b>	<b>Tuesday</b>	<b>Wednesday</b>	<b>Thursday</b>	<b>Friday</b>
<b>A: 8.35am – 9.35am</b>	12A/Gg1 Ms Freaney 12A/Bs1 Mr Witts 12A/De1 Mr Enticott	12C/EI1 Miss Perchard 12C/Dr1 Miss Aldridge 12C/Ma1 Mr Scarborough 12C/Gg1 Mrs Squires 12C/Bi1 Mrs Jolly 12C/Fr1 Mrs Scarborough	12E/At1 Mrs Pinnington 12E/Hi1 Mrs Harvey 12E/Ph1 Mrs Calcutt 12E/So1 Mrs Rayner	12B/Mu1 Mr Dickson 12B/Po1 Mr Pearce 12B/Bi1 Ms Calne	12D/EI1 Miss Burt 12D/Re1 Mrs Upton 12D/Fm1 Mr Lau 12D/So1 Mrs Rayner
<b>B: 10.55am – 11.55am</b>	12B/Am1 Mr Moulton 12B/Po1 Mr Mulcahy 12B/Pd1 Mrs Ryan	12D/EI1 Miss Burt 12D/Re1 Mrs Upton 12D/Bi1 Miss Watkins	12A/Hi1 Mr Pearce 12A/Bs1 Mrs George 12A/De1 Mrs Jarrauld	12C/EI1 Mrs Jones 12C/Ma1 Mrs Moore 12C/Cp1 Mr Ngai 12C/Ec1 Mr Witts 12C/Fr1 Mrs Keeling	12E/At1 Miss Fisher 12E/Ma1 Mrs Bidle 12E/Hi1 Mr Mulcahy
<b>C: 2pm – 3pm</b>	12B/Mu1 Mr Garner 12B/Ma1 Mr Scarborough 12B/Py1 Mrs Matthews 12D/Bs1 Mr Witts	12D/Ma1 Mr Ellis 12D/So1 Mrs Heale	12A/Hi1 Mr Rowe 12A/Ph1 Mr Borthwick 12A/Ch1 Mr Watts 12A/Ss1 Miss Bloom 12A/Py1 Mrs Matthews	12C/Dr1 Mrs Seager 12C/Bi1 Mr Moore	12E/Py1 Mrs Edmunds 12E/So1 Mrs Garside
<b>D: 3pm – 4pm</b>	12D/Fi1 Mr Cole 12D/EI1 Mrs Everett 12D/Fm1 Mr Longfield 12D/Bs1 Mrs George		12B/Am1 Mrs Carter 12B/Ma1 Miss Anderson-Brown	12E/Ma1 Mr Moore 12E/Ph1 Mr Borthwick 12E/Pd1 Ms Calver	12E/Pd1 Miss Harwood

**Tuesday Timings: Session B – 10.45am – 11.45am / C – 1.30pm – 2.30pm**

**Week 2.2**

Session and Time	Monday	Tuesday	Wednesday	Thursday	Friday
<b>A:</b> 8.35am – 9.35am	12C/Bi1 Mr Moore 12C/Cp1 Mr Ngai 12C/Ec1 Mr Witts	12E/Cc1 Mrs Smyth 12E/Hi1 Mrs Harvey 12E/Py1 Mrs Matthews	12B/Ma1 Miss Anderson-Brown 12B/Py1 Mrs Edmunds 12B/Pd1 Mrs Ryan	12D/Fi1 Mr Cole 12D/Bi1 Mrs Calne 12D/Bs1 Mrs George	12A/Bs1 Mr Witts
<b>B:</b> 10.55am – 11.55am	12D/Fm1 Mr Longfield 12D/Bi1 Miss Watkins	12A/Ph1 Mrs Calcutt 12A/Ch1 Mr James	12C/Ma1 Mrs Moore 12C/Gg1 Mr Harrison 12C/Cp1 Miss Rooney	12E/At1 Mrs Pinnington 12E/Ma1 Mrs Bidle 12E/Ph1 Mrs Calcutt 12E/So1 Mrs Garside 12E/Pd1 Ms Calver 12E/Sp1 Miss Smith	12B/Mu1 Mr Garner 12B/Bi1 Ms Calne 12B/Py1 Mrs Matthews 12B/Pd1 Miss Bentley
<b>C:</b> 2pm – 3pm	12D/Fi1 Mr Cole 12D/EI1 Mrs Everett 12D/Re1 Mrs Upton 12D/So1 Mrs Rayner 12D/Bs1 Mr Witts	12A/Gg1 Mr Harrison 12A/Ss1 Mr Savage	12C/EI1 Miss Perchard 12C/Ma1 Mr Scarborough 12C/Bi1 Mrs Jolly 12C/Fr1 Mrs Scarborough	12C/EI1 Mrs Jones 12E/Cc1 Mr Rowe 12E/Ph1 Mr Borthwick 12A/Py1 Mrs Edmunds	
<b>D:</b> 3pm – 4pm	12B/Ma1 Mr Scarborough		12A/Ar1 Miss Flack 12A/Hi1 Mr Pearce 12A/Gg1 Ms Freaney 12A/Ch1 Mr Watts 12A/Ss1 Miss Bloom 12A/De1 Mr Enticott	12C/Dr1 Mrs Seager 12C/Cp1 Miss Rooney 12E/Py1 Mrs Edmunds	12E/Ma1 Mr Moore 12E/Pd1 Miss Harwood

**Tuesday Timings: Session B – 10.45am – 11.45am / C – 1.30pm – 2.30pm**

## Appendix 3: Access to Teaching Staff in the event of Scenario B

### Year 13: Live Q&A with Subject Teachers

#### Scenario B – Partial Lockdown (Class or Year Group Absences)

Please note that all Q&A sessions with teaching staff take place at *the start of the Session* and last for one hour. Timings as indicated. Students who do not wish to speak in front of the group may type questions into the chat function and their teacher will respond.

#### Week 1.1

Session and Time	Monday	Tuesday	Wednesday	Thursday	Friday
<b>A: 8.35am – 9.35am</b>	13E/Bs1 Miss George 13E/Ss1 Mr Ellis 13E/Py1 Mrs Matthews 13E/Fm1 Miss Anderson-Brown	13B/Hs1 Mrs Oswick 13B/De1 Mr Enticott 13B/Hi1 Mrs Harvey 13B/Ch1 Mr James	13D/Mu1 Mr Garner 13D/Ss1 Mr Ellis 13D/Hs1 Mrs Oswick 13D/Sp1 Ms Sparrow 13D/Gg1 Mrs Squires	13A/Cc1 Mr Rowe 13A/Bi1 Mr Moore	13E/Mt1 Mr Green 13C/Ar1 Mr Moulton 13C/So1 Mrs Rayner 13C/Bs1 Mr Witts 13C/Py1 Mrs Matthews 13C/Ma1 Mrs Taylor
<b>B: 10.55am – 11.55am</b>	13A/Dr1 Miss Seager 13A/So1 Mrs Rayner 13A/Pd1 Miss Harwood 13A/Cc1 Mrs Smyth 13A/Ma1 Mr Longfield	13C/Ar1 Miss Flack 13C/Hi1 Mr Rowe 13C/Ma1 Mr Kettle 13C/Po1 Mr Mulcahy 13C/Ph1 Mr Borthwick	13E/E11 Mrs O'Connor 13E/Py1 Mrs Edmunds 13E/Re1 Mrs Upton 13E/Bi1 Ms Calne 13E/Ch1 Mrs Hedge	13B/Hs1 Miss George 13B/Ch1 Mr Watts	13D/Py1 Mrs Edmunds 13D/Ss1 Mrs Denyer 13D/Bi1 Mrs Ottaway
<b>C: 2pm – 3pm</b>	13B/Fi1 Mr Cole 13B/At1 Miss Daniels 13B/Hs1 Miss George 13B/Ph1 Mr Borthwick	13D/Hs1 Mrs Garside 13D/Ss1 Miss Black 13D/Sp1 Miss Smith 13D/Fr1 Miss Keeling 13D/Ec1 Ms Freaney	13A/E11 Mrs O'Connor 13B/At1 Mrs Pinnington 13A/Pd1 Mrs Ryan 13A/Ma1 Mr Lau 13A/Bi1 Miss Watkins	13C/So1 Mrs Garside 13C/Py1 Mrs Edmunds 13C/Bs1 Mrs George 13E/Ss1 Mrs Denyer 13C/Hi1 Mrs Preston 13C/Po1 Mr Pearce	13E/Re1 Mrs Wright 13E/Bi1 Mrs Ottaway 13E/Ch1 Mr Watts 13E/Fm1 Mrs Kahler
<b>D: 3pm – 4pm</b>	13D/Ec1 Mr Witts 13D/Py1 Mrs Matthews 13D/Bi1 Mrs Jolly		13B/Ph1 Mrs Calcutt	13E/Mt1 Mr Green 13E/Am1 Miss Daniels 13D/Cp1 Mr Ngai	13B/Fi1 Mr Cole 13A/E11 Mrs Hill 13A/Ma1 Mr Lau

**Tuesday Timings: Session B – 10.45am – 11.45am / C – 1.30pm – 2.30pm**

#### Week 1.2

Session and Time	Monday	Tuesday	Wednesday	Thursday	Friday
<b>A: 8.35am – 9.35am</b>	13E/Am1 Mr Moulton 13E/Bs1 Miss George 13E/Ss1 Mr Ellis	13B/Hs1 Mrs Garside 13B/De1 Mrs Jarrald 13B/Ph1 Mr Borthwick	13D/Mu1 Mr Green 13D/Ec1 Mr Witts 13D/Sp1 Ms Sparrow 13D/Fr1 Mr Dunne	13A/E11 Mrs O'Connor 13A/Pd1 Mrs Ryan 13B/Hi1 Mrs Harvey	13C/Ar1 Miss Flack 13C/Ma1 Mrs Taylor

			13D/Gg1 Mr Harrison		
<b>B: 10.55am – 11.55am</b>	13C/Hi1 Mrs Preston 13C/Po1 Mr Pearce	13E/E11 Mrs O'Connor 13E/Mt1 Mr Green 13E/Am1 Miss Daniels 13E/Bs1 Mr Witts 13E/Bi1 Mrs Ottaway 13E/Ch1 Mrs Hedge	13B/At1 Mrs Pinnington 13B/Hs1 Miss George 13B/Ch1 Mr Watts 13B/Ph1 Mrs Calcutt	13D/Py1 Mrs Edmunds 13D/Hs1 Mrs Garside 13D/Cp1 Mr Ngai 13D/Sp1 Miss Smith 13D/Ec1 Ms Freaney	13A/So1 Mrs Rayner 13A/Bi1 Mr Moore
<b>C: 2pm – 3pm</b>	13D/Mu1 Mr Garner 13D/Py1 Mrs Matthews 13D/Cp1 Miss Rooney 13D/Bi1 Mrs Jolly	13A/So1 Mrs Garside 13A/Cc1 Mrs Smyth 13A/Ma1 Mr Longfield	13C/Ar1 Mr Moulton 13C/So1 Mrs Rayner 13C/Bs1 Mrs George 13C/Ma1 Mr Kettle 13C/Ph1 Mrs Calcutt	13E/E11 Miss Sacre 13A/Dr1 Miss Seager 13E/Re1 Mrs Upton 13E/Bs1 Miss George 13E/Py1 Mrs Matthews 13E/Bi1 Ms Calne 13E/Fm1 Miss Anderson-Brown	13A/Dr1 Miss Aldridge 13B/Hs1 Mrs Garside 13B/De1 Mr Enticott
<b>D: 3pm – 4pm</b>	13B/Hi1 Mrs Ling 13B/Ch1 Mr James		13A/Bi1 Miss Watkins	13C/So1 Mrs Rayner 13C/Py1 Mrs Matthews 13C/Ph1 Mr Borthwick	13B/Fi1 Mr Cole

**Tuesday Timings: Session B – 10.45am – 11.45am / C – 1.30pm – 2.30pm**

**Week 2.1**

<b>Session and Time</b>	<b>Monday</b>	<b>Tuesday</b>	<b>Wednesday</b>	<b>Thursday</b>	<b>Friday</b>
<b>A: 8.35am – 9.35am</b>	13A/E11 Mrs Hill 13A/Dr1 Miss Seager 13A/So1 Mrs Rayner 13A/Pd1 Miss Harwood 13A/Cc1 Mrs Smyth 13A/Ma1 Mr Lau 13A/Bi1 Miss Watkins	13C/Ar1 Miss Flack 13C/Bs1 Mr Witts 13C/Hi1 Mrs Preston 13C/Po1 Mr Mulcahy 13C/Ph1 Mr Borthwick	13E/Am1 Miss Daniels 13E/Py1 Mrs Edmunds 13E/Re1 Mrs Upton 13E/Ss1 Miss Black 13E/Ch1 Mr Watts 13E/Fm1 Miss Anderson-Brown	13B/Fi1 Mr Cole 13B/Hi1 Mrs Harvey	13D/Py1 Mrs Edmunds 13D/Ss1 Mrs Denyer
<b>B: 10.55am – 11.55am</b>	13B/At1 Miss Daniels 13B/Hs1 Mrs Oswick 13B/Hi1 Mrs Ling 13B/Ch1 Mr Watts 13B/Ph1 Mr Borthwick	13D/Mu1 Mr Garner 13D/Hs1 Mrs Garside 13D/Fr1 Mr Dunne 13D/Bi1 Mrs Ottaway	13A/E11 Mrs O'Connor 13A/So1 Mrs Rayner 13A/Pd1 Mrs Ryan	13C/Py1 Mrs Edmunds 13C/Bs1 Miss George 13C/Hi1 Mr Rowe 13C/Ma1 Mrs Taylor 13C/Ph1 Mrs Calcutt	13E/E11 Miss Sacre 13E/Mt1 Mr Green 13E/Am1 Mr Moulton 13E/Bs1 Mr Witts 13E/Py1 Mrs Matthews 13E/Fm1 Mrs Kahler
<b>C: 2pm – 3pm</b>	13B/Fi1 Mr Cole 13B/De1 Mr Enticott	13D/Ss1 Miss Black 13D/Sp1 Miss Smith 13D/Fr1 Miss Keeling 13D/Ec1 Ms Freaney 13D/Gg1 Mr Harrison 13D/Mu1 Mr Green	13B/Hs1 Miss George 13A/Bi1 Miss Watkins	13C/So1 Mrs Rayner 13C/Po1 Mr Pearce	13B/Fi1 Mr Cole 13E/Re1 Mrs Wright 13E/Bi1 Mrs Ottaway

<b>D: 3pm – 4pm</b>	13D/Py1 Mrs Matthews 13D/Cp1 Miss Rooney 13D/Gg1 Mrs Squires 13D/Bi1 Mrs Jolly		13B/At1 Mrs Pinnington 13B/Ch1 Mr James 13B/Ph1 Mrs Calcutt	13E/E11 Mrs O'Connor 13E/Mt1 Mr Green 13E/Ss1 Mrs Denyer 13D/Cp1 Mr Ngai 13E/Bi1 Ms Calne 13E/Ch1 Mrs Hedge	13A/Ma1 Mr Lau 13A/Bi1 Mr Moore
---------------------	---	--	---	--	------------------------------------

**Tuesday Timings: Session B – 10.45am – 11.45am / C – 1.30pm – 2.30pm**

**Week 2.2**

<b>Session and Time</b>	<b>Monday</b>	<b>Tuesday</b>	<b>Wednesday</b>	<b>Thursday</b>	<b>Friday</b>
<b>A: 8.35am – 9.35am</b>	13C/Ar1 Mr Moulton 13C/So1 Mrs Rayner 13C/Ma1 Mr Kettle	13E/Am1 Miss Daniels 13E/Bs1 Mr Witts 13E/Ss1 Mr Ellis 13E/Fm1 Mrs Kahler	13B/At1 Mrs Pinnington 13B/Hs1 Miss George 13B/De1 Mrs Jarrald	13D/Ss1 Mrs Denyer 13D/Hs1 Mrs Oswick 13D/Cp1 Miss Rooney 13D/Gg1 Mrs Squires	13A/Dr1 Miss Aldridge 13A/So1 Mrs Rayner 13A/Cc1 Mr Rowe 13A/Ma1 Mr Lau
<b>B: 10.55am – 11.55am</b>	13D/Mu1 Mr Garner 13D/Ec1 Mr Witts 13D/Ss1 Mr Ellis 13D/Py1 Mrs Matthews 13D/Fr1 Miss Keeling 13D/Gg1 Mr Harrison 13D/Bi1 Mrs Jolly	13A/Dr1 Miss Seager 13A/E11 Mrs Hill 13A/So1 Mrs Garside 13A/Pd1 Miss Harwood 13A/Cc1 Mrs Smyth	13C/So1 Mrs Rayner 13C/Py1 Mrs Edmunds 13C/Hi1 Mr Rowe 13C/Ma1 Mrs Taylor 13C/Po1 Mr Pearce 13C/Ph1 Mrs Calcutt	13E/Mt1 Mr Green 13E/E11 Mrs O'Connor 13E/Am1 Mr Moulton 13E/Re1 Mrs Upton 13E/Ss1 Miss Black 13E/Py1 Mrs Matthews	13B/Hs1 Mrs Garside 13B/Ch1 Mr James
<b>C: 2pm – 3pm</b>	13D/Sp1 Ms Sparrow 13D/Ec1 Ms Freaney	13A/E11 Mrs O'Connor 13A/Bi1 Miss Watkins	13C/Ar1 Mr Moulton 13C/Bs1 Mrs George	13E/E11 Miss Sacre 13E/Bi1 Ms Calne 13E/Ch1 Mr Watts	13B/De1 Mr Enticott
<b>D: 3pm – 4pm</b>	13B/Fi1 Mr Cole 13B/At1 Miss Daniels 13B/Hs1 Miss George 13B/Hi1 Mrs Ling			13C/Py1 Mrs Matthews 13C/Hi1 Mrs Preston	13E/Mt1 Mr Green 13E/Re1 Mrs Wright 13D/Cp1 Mr Dickerson

**Tuesday Timings: Session B – 10.45am – 11.45am / C – 1.30pm – 2.30pm**